



Welcome to

The Traders & Investors Club

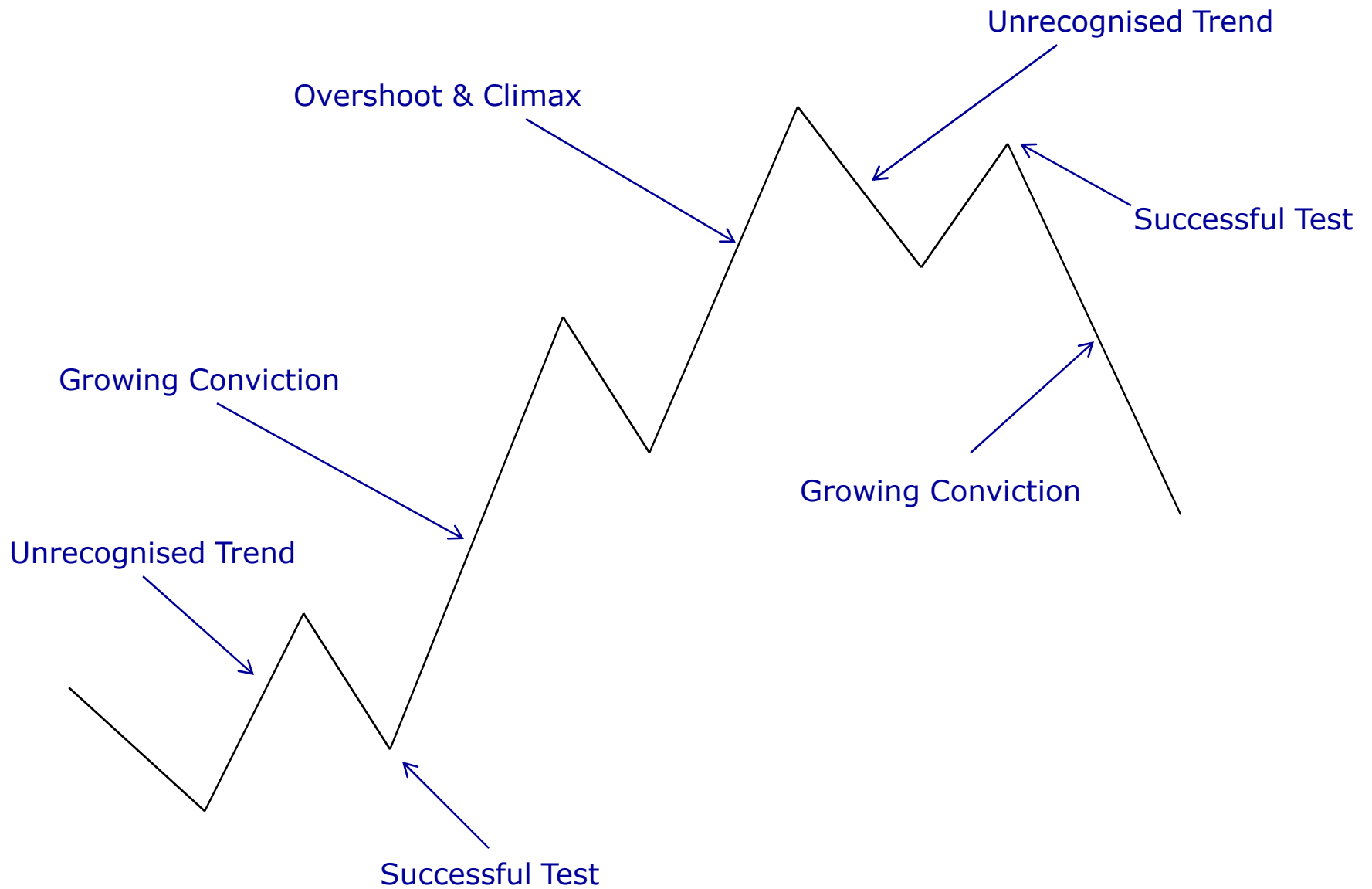
Tuesday, 19th October 2010

www.tradersandinvestorsclub.co.uk



Market Roundup

Boom Bust Cycle

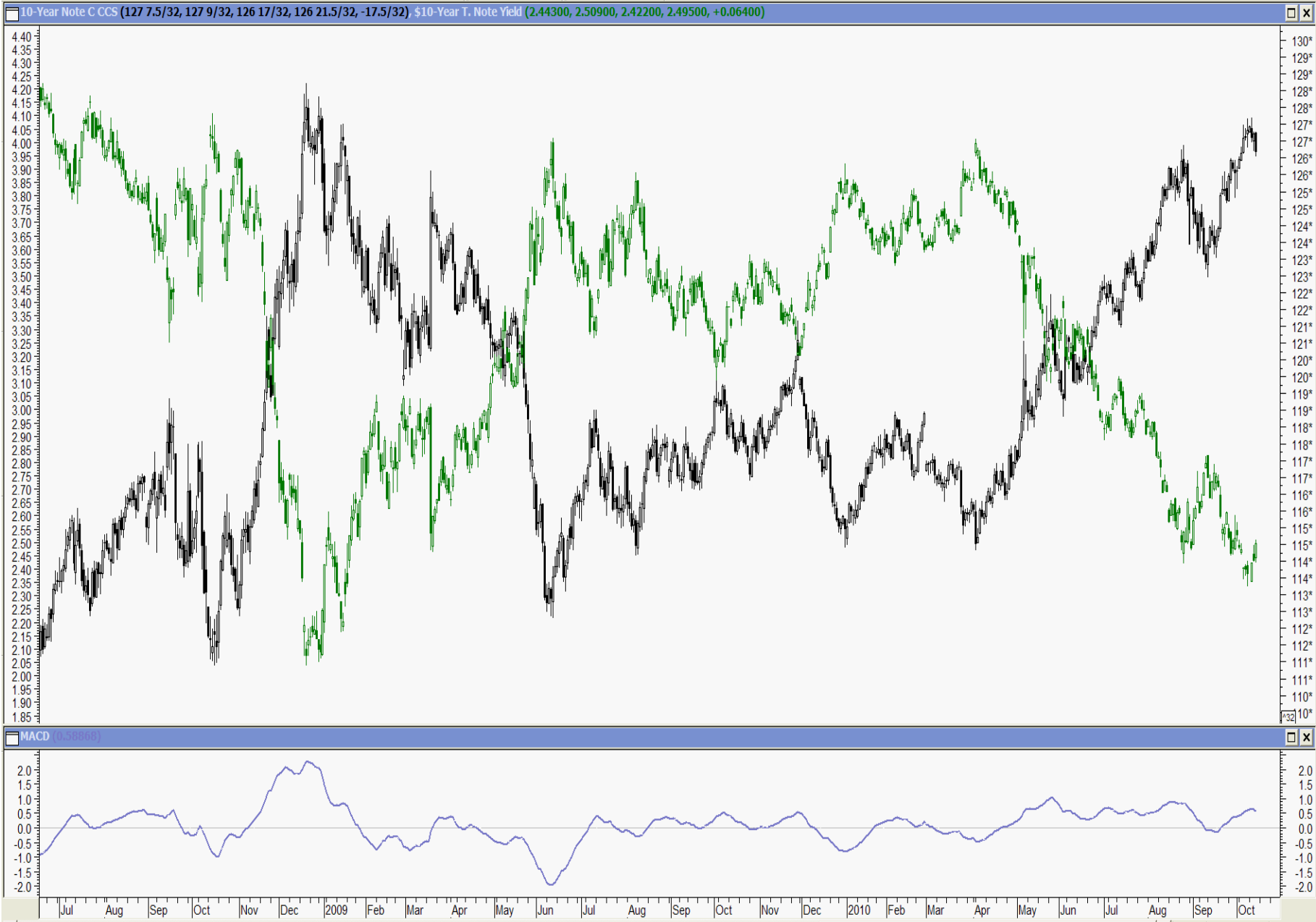




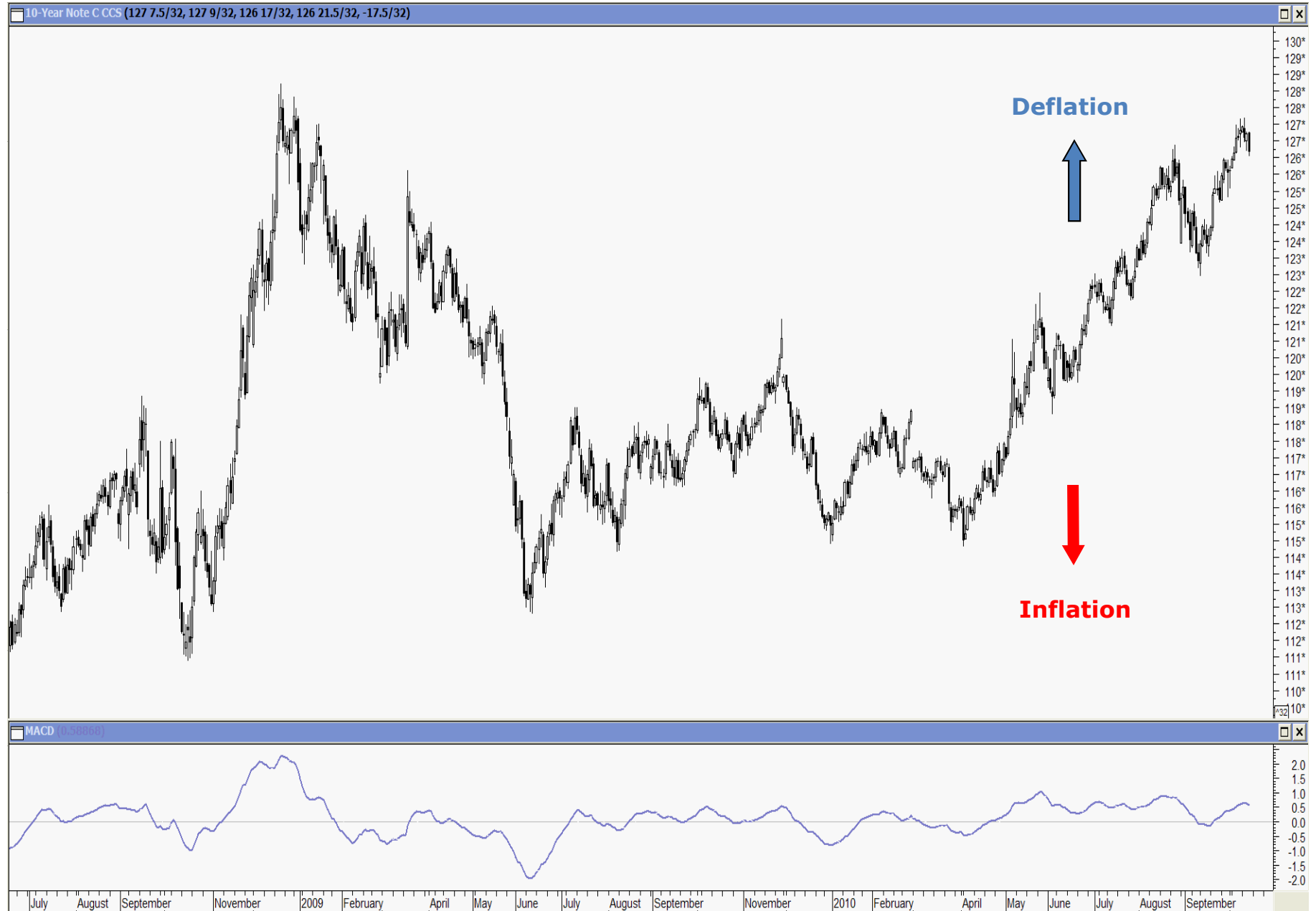


US Treasuries

10 Year Treasury Note



10 Year Treasury Note



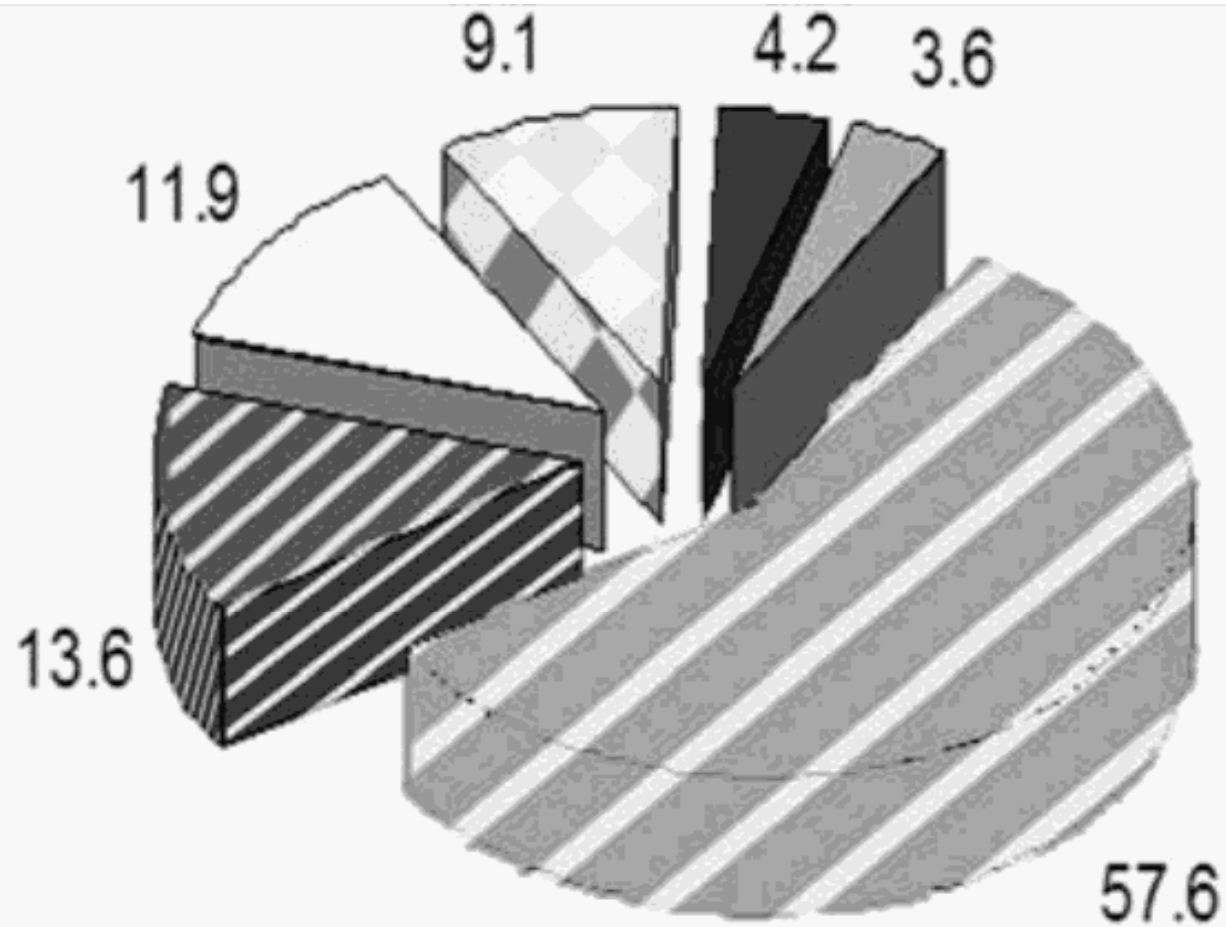
10 Year Treasury Note





US Dollar Index

US Dollar Index Constituents

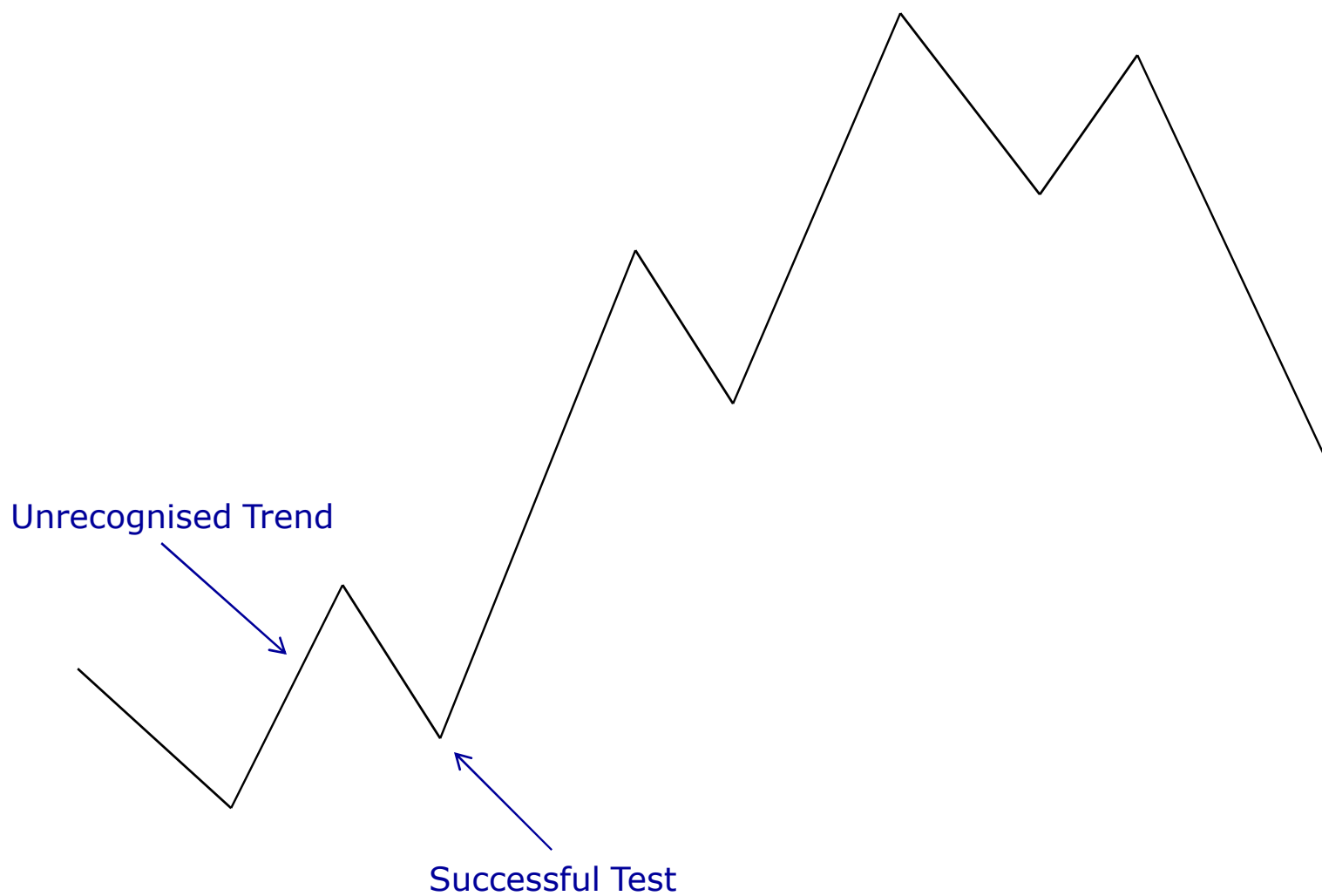


 Euro	 Yen	 Pound
 Canadian \$	 Sweden Krona	 Swiss Franc

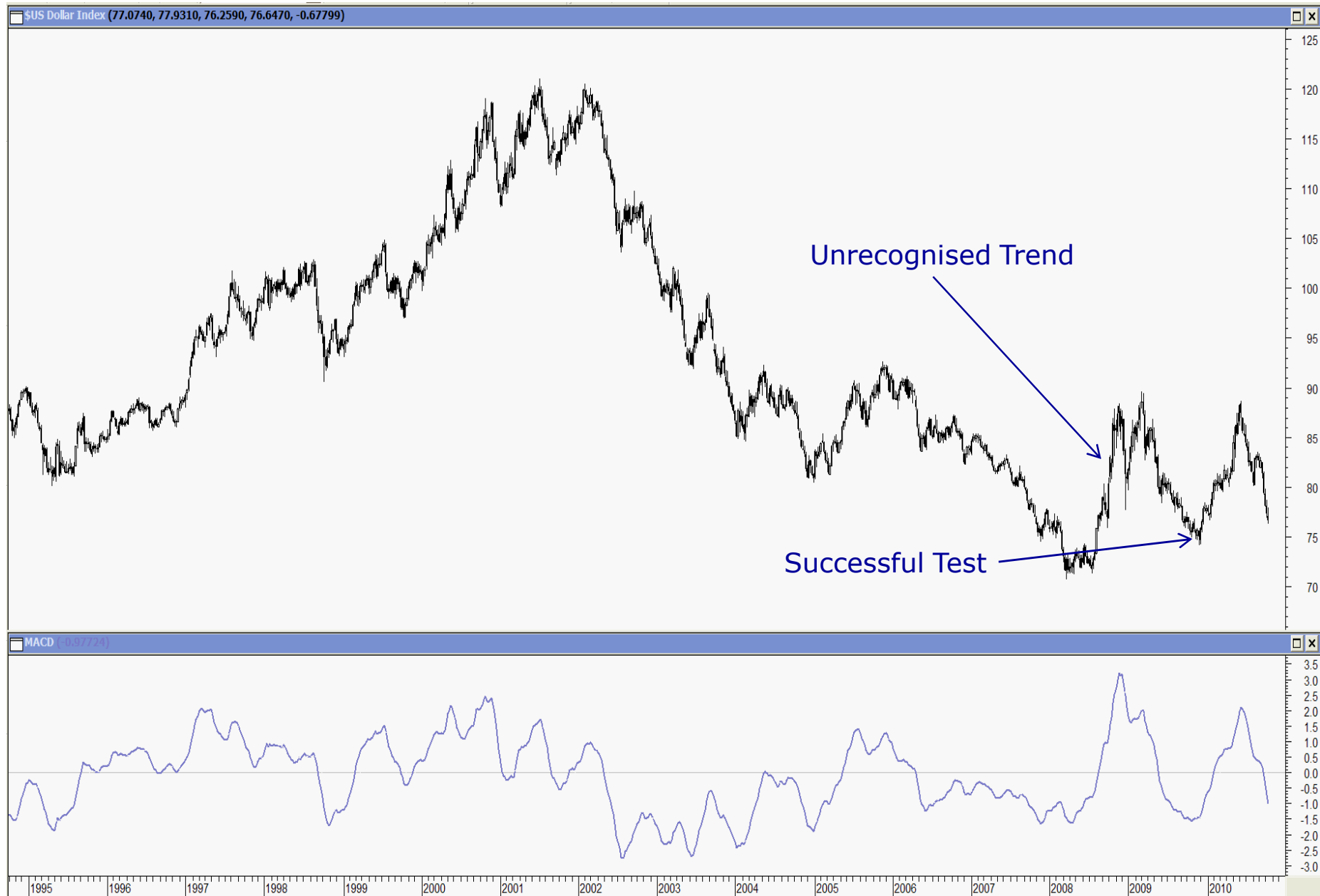
US Dollar Index



Boom Bust Cycle



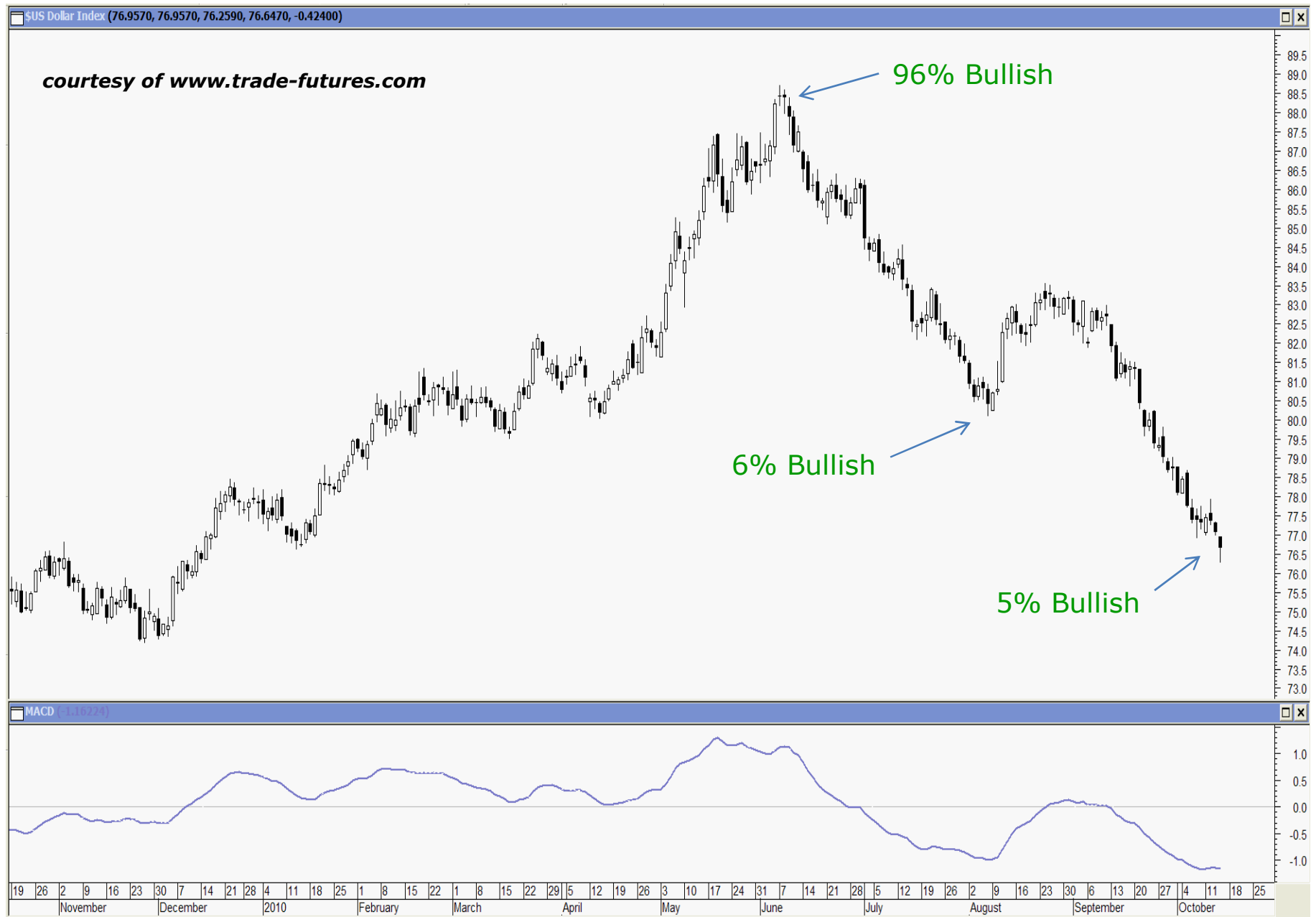
US Dollar Index



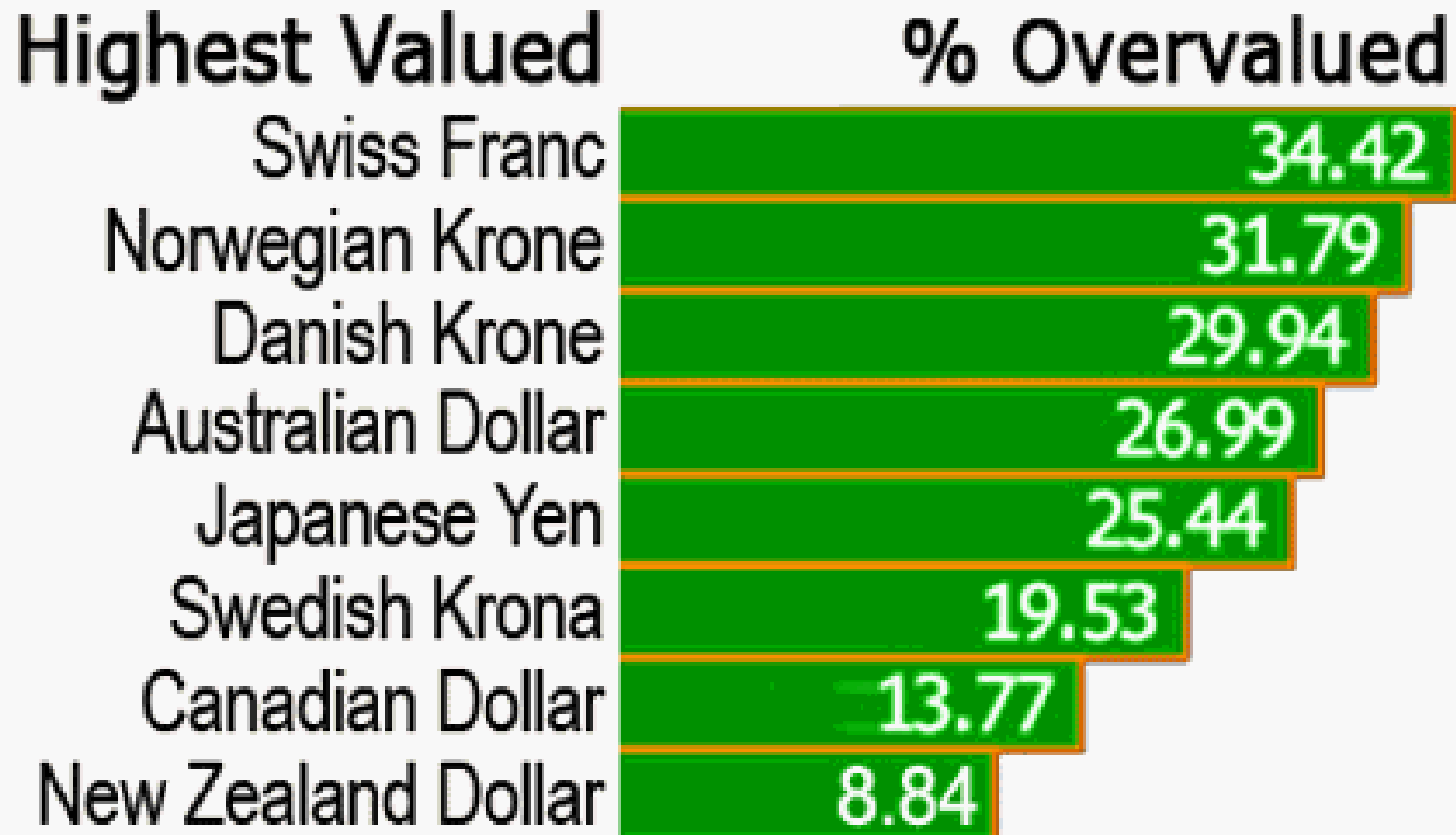
US Dollar Index



US Dollar Index Sentiment Indicator

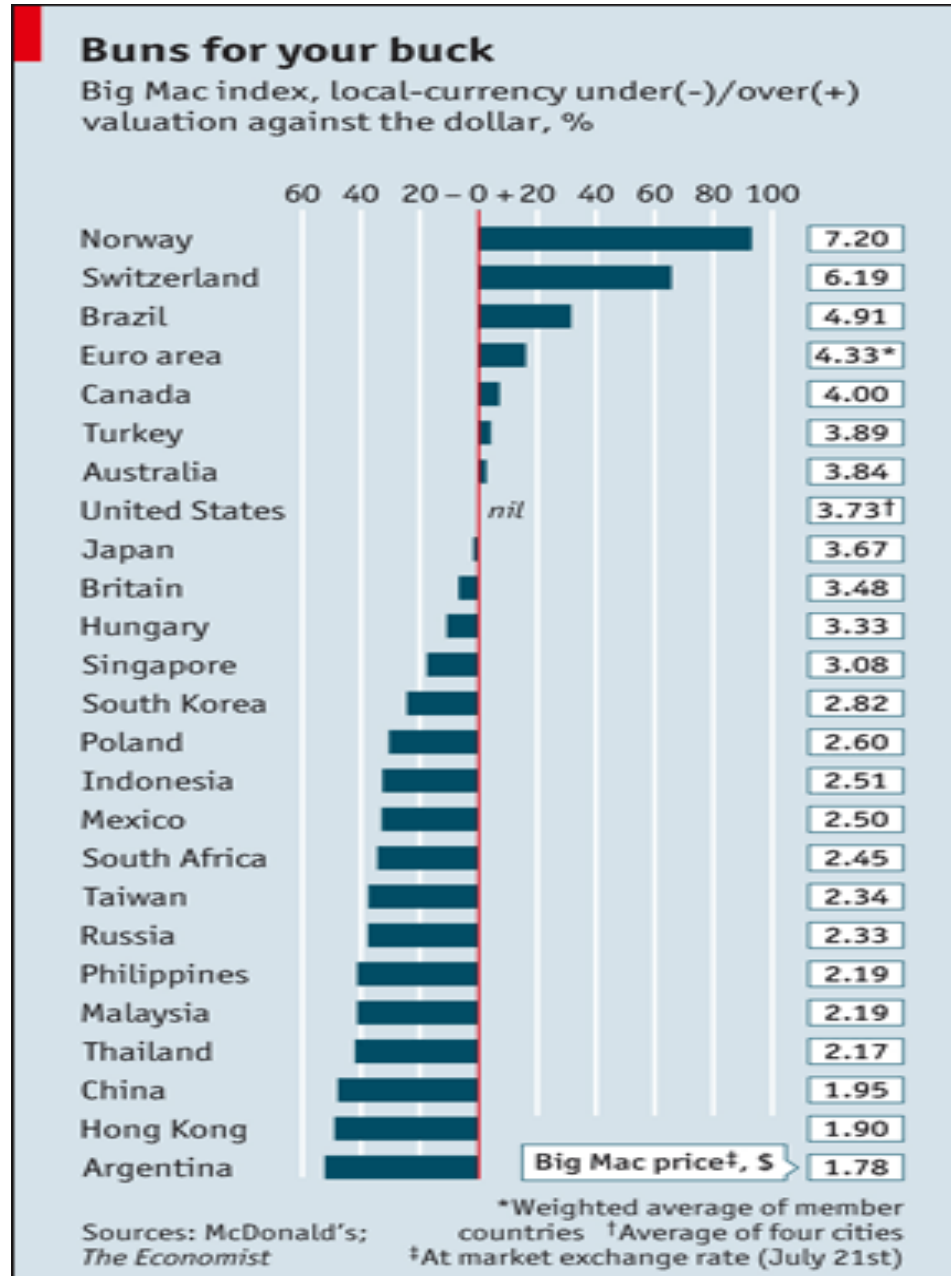


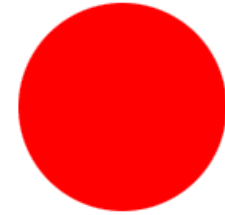
US Dollar



**OECD's measure of the most overvalued currencies
based on Purchasing Price Parity (PPP)**

US Dollar Big Mac Index





JPYUSD

US Dollar v. Yen - Monthly



US Dollar v. Yen



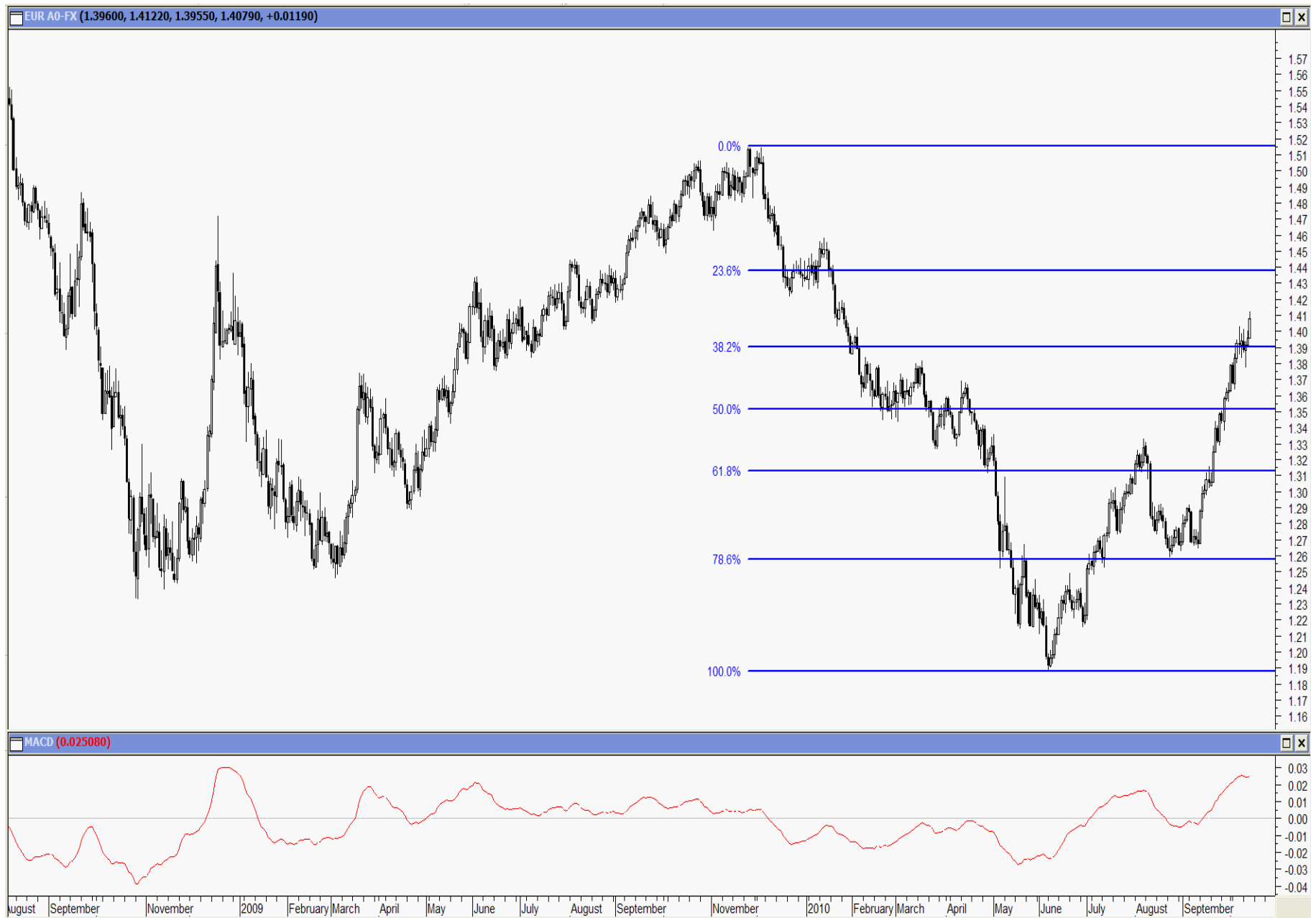
US Dollar v. Yen



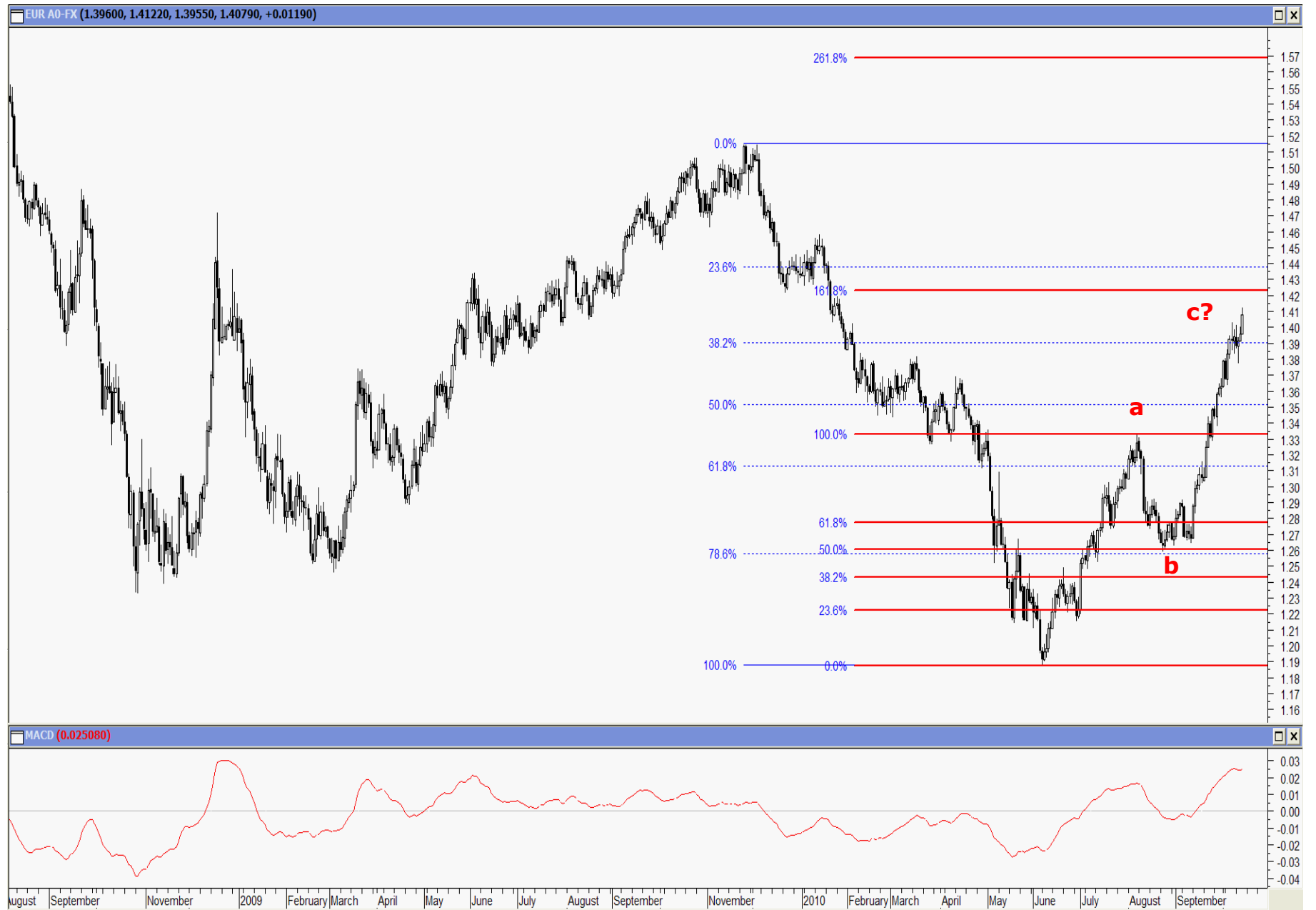


Euro

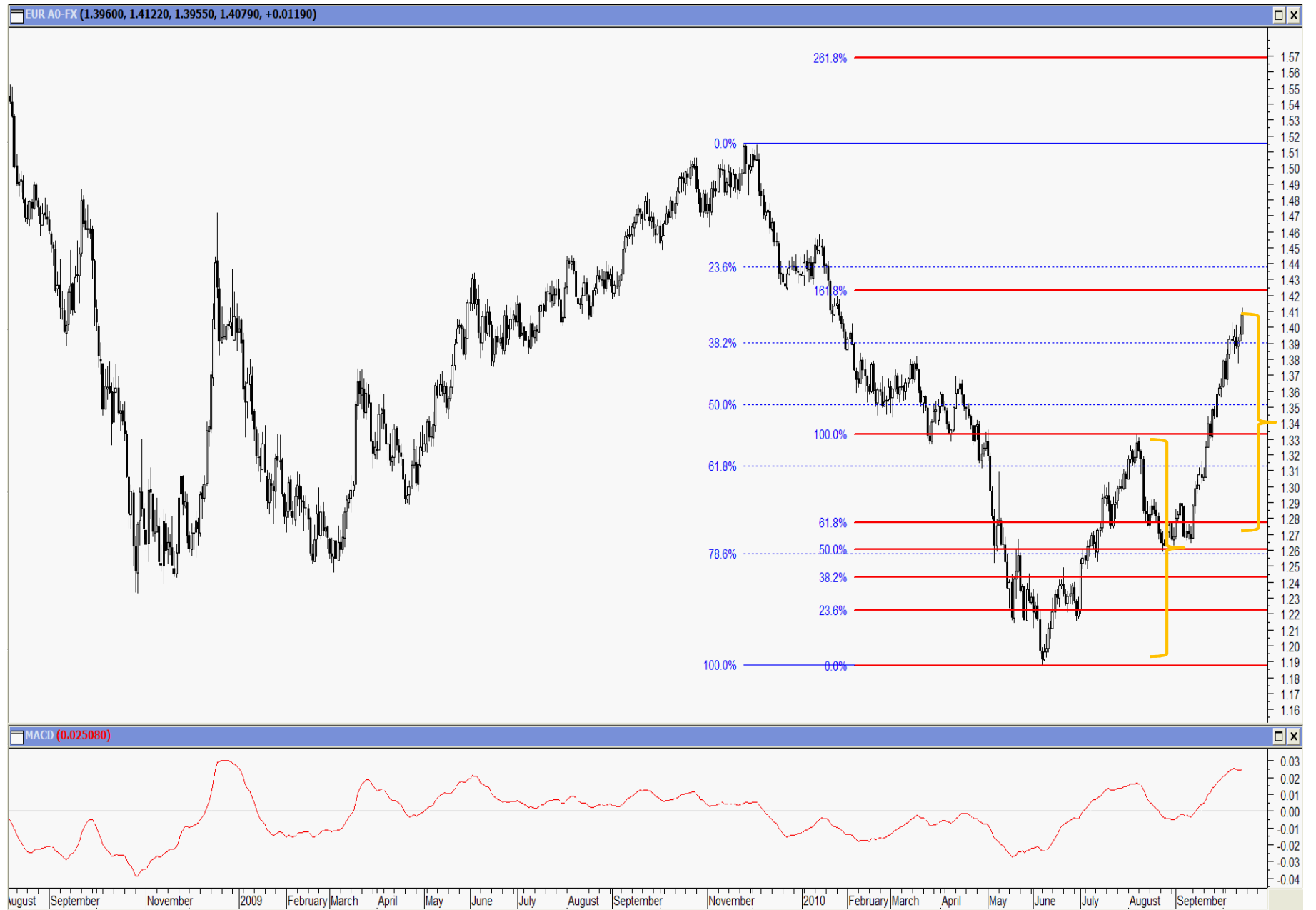
EURUSD



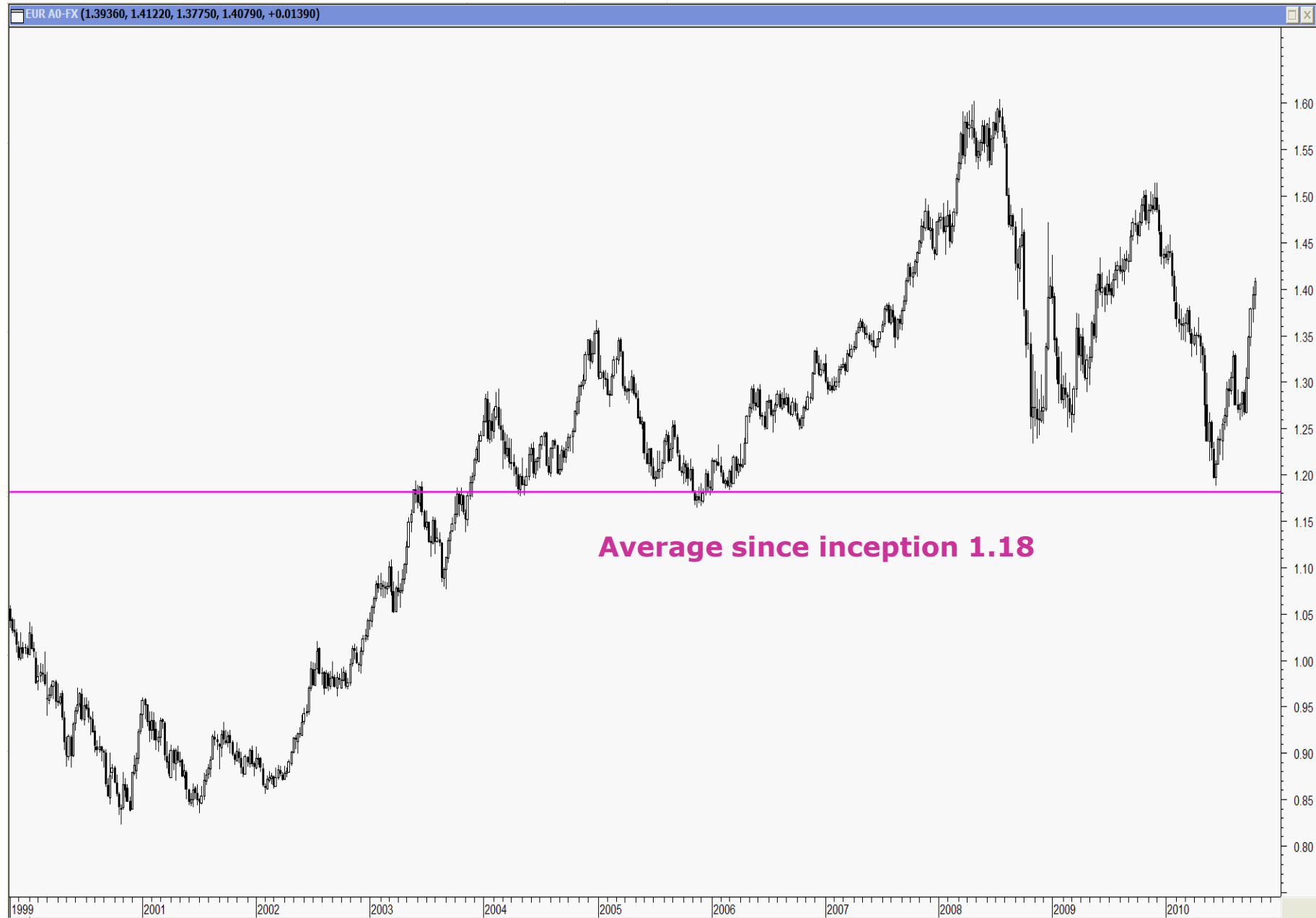
EURUSD



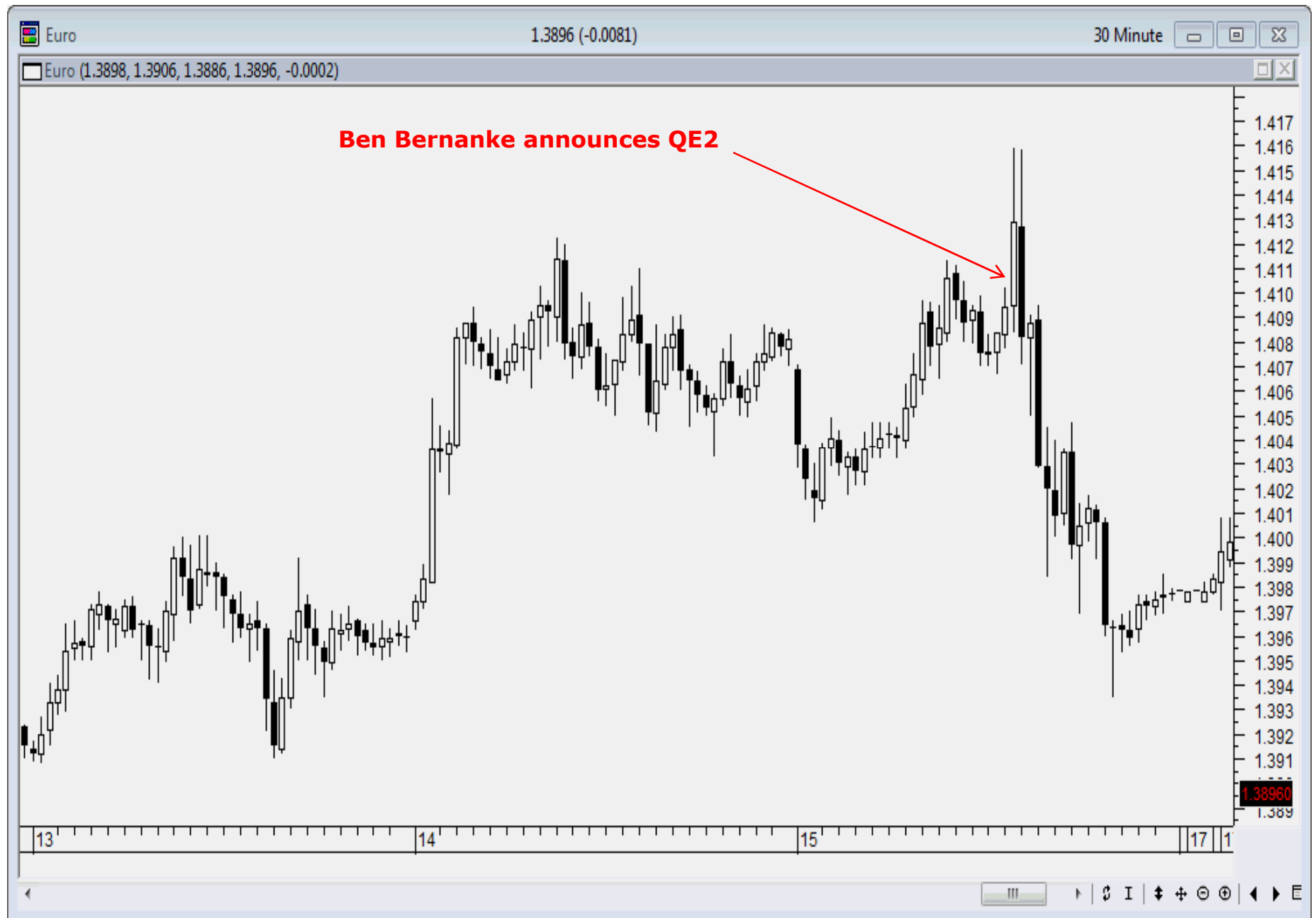
EURUSD



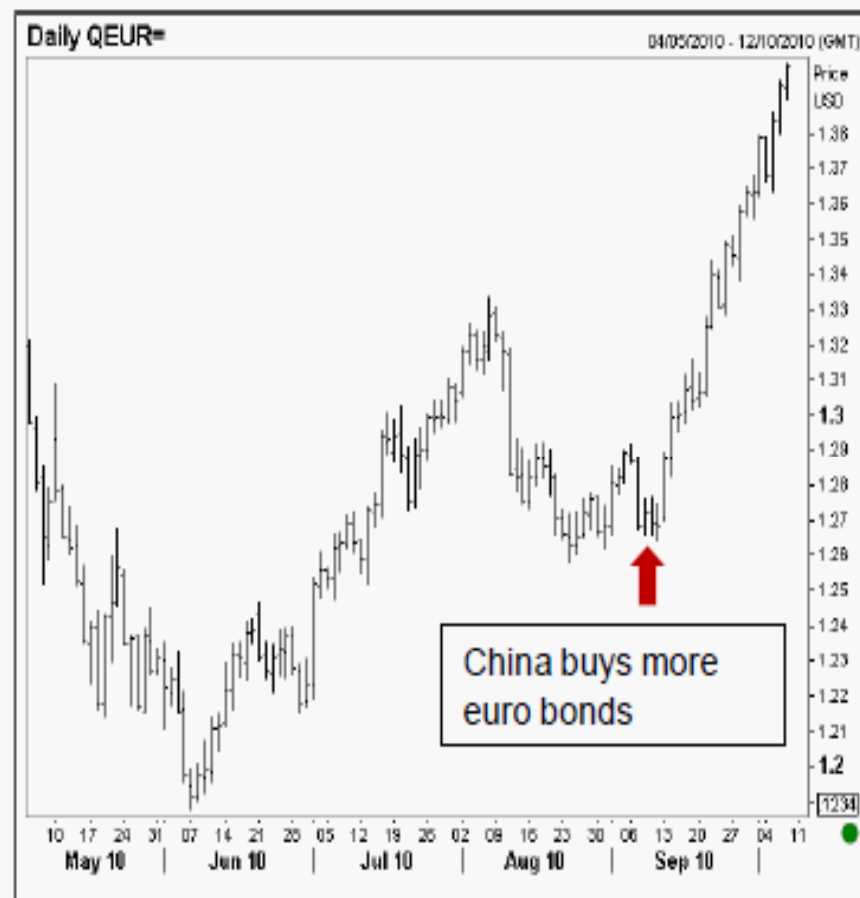
EURUSD

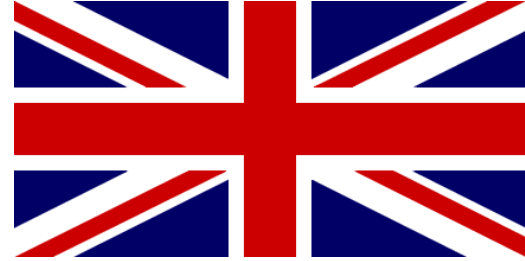


EURUSD



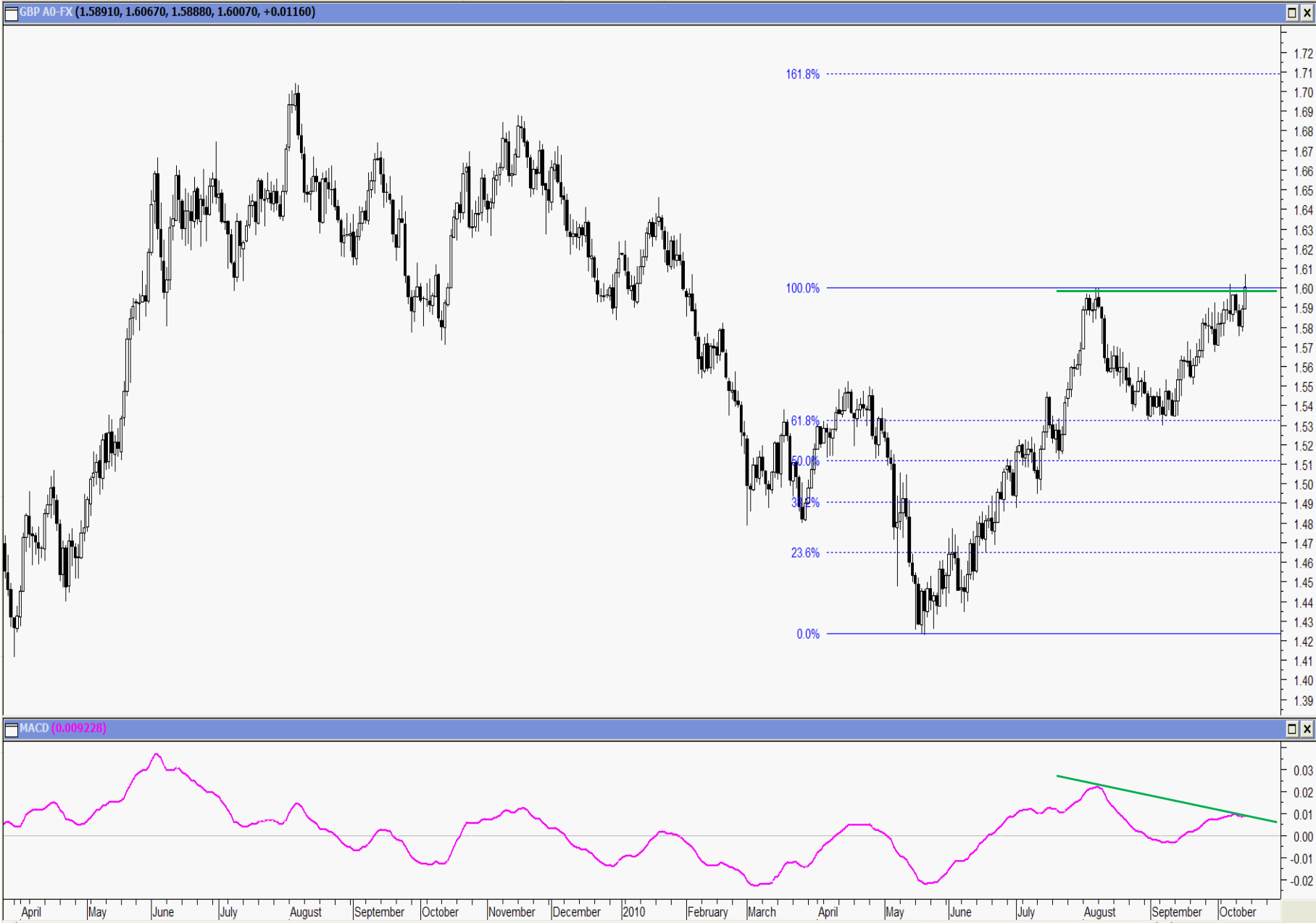
EURCNY





GBPUSD

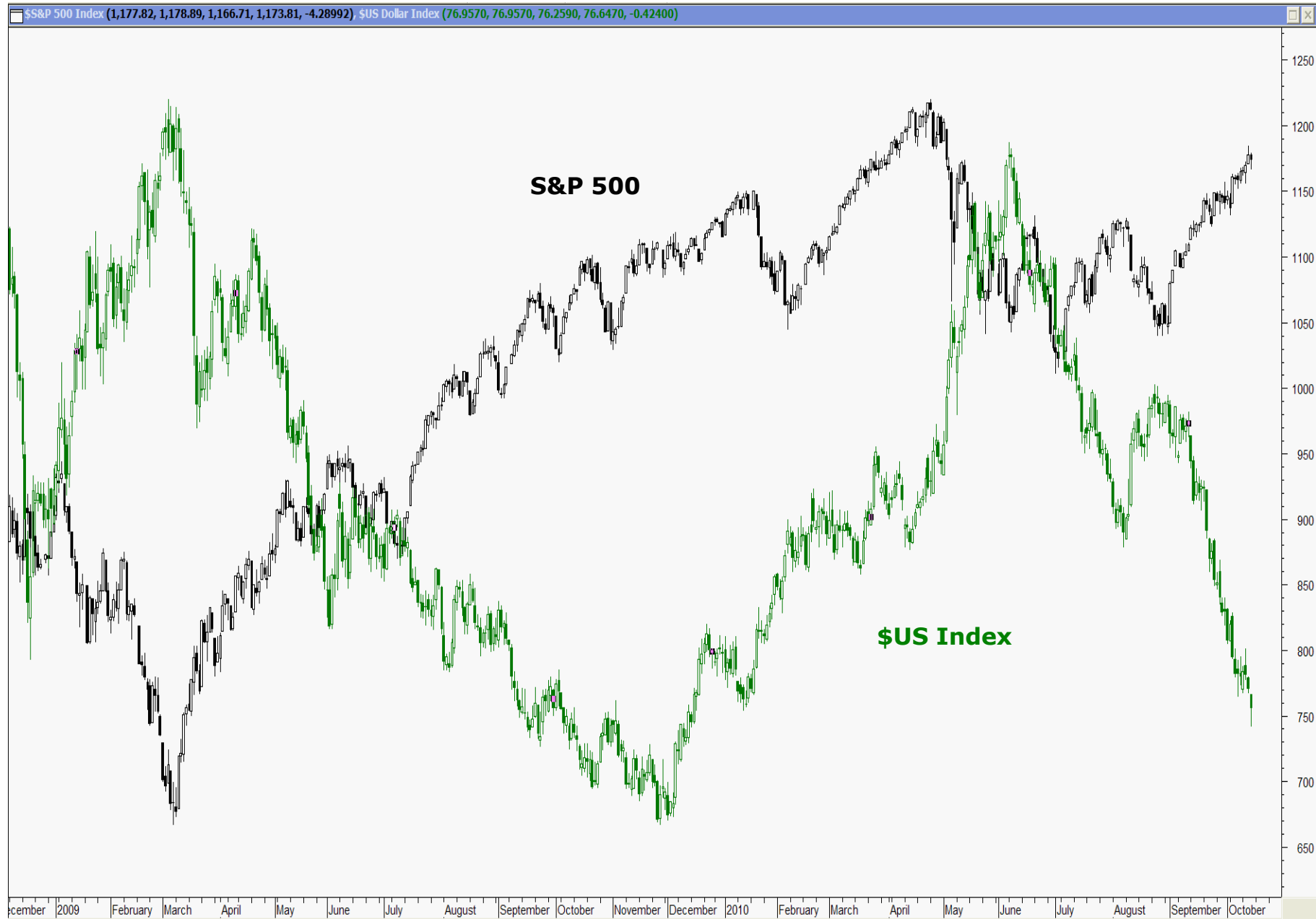
Sterling v. US Dollar



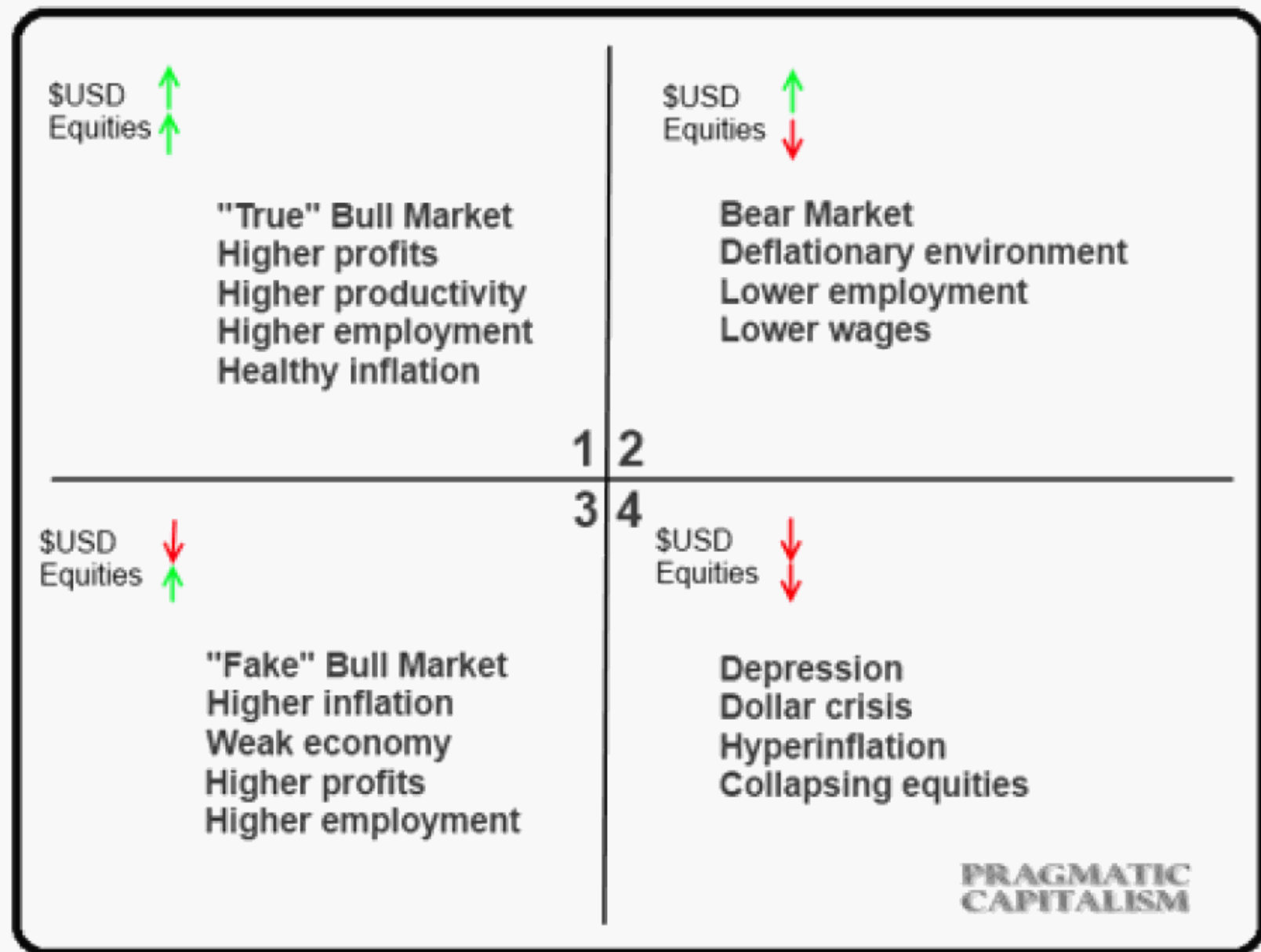


S&P500

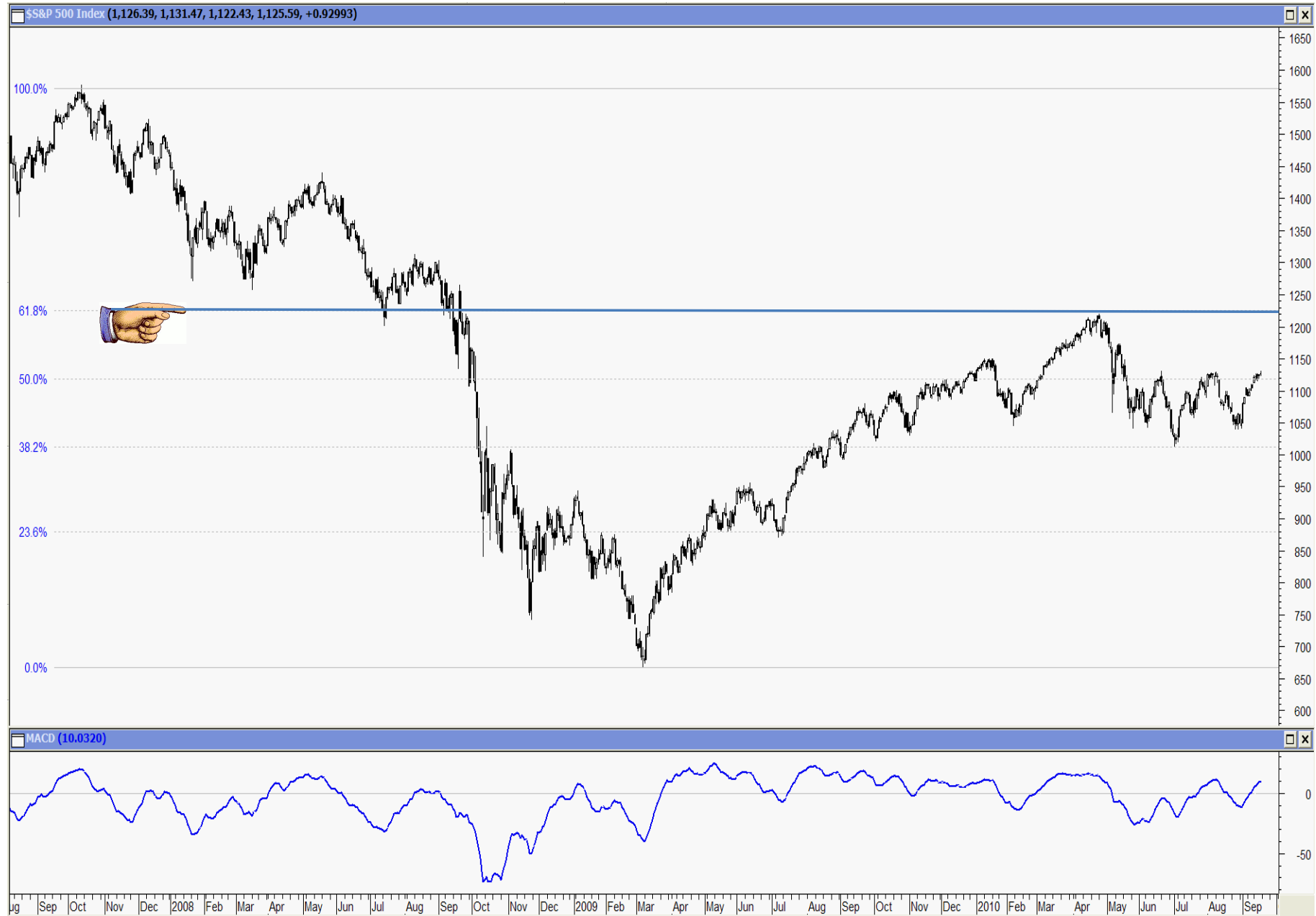
US Dollar Index v. S&P500



S&P 500



S&P 500



S&P 500 v. Banking Sector



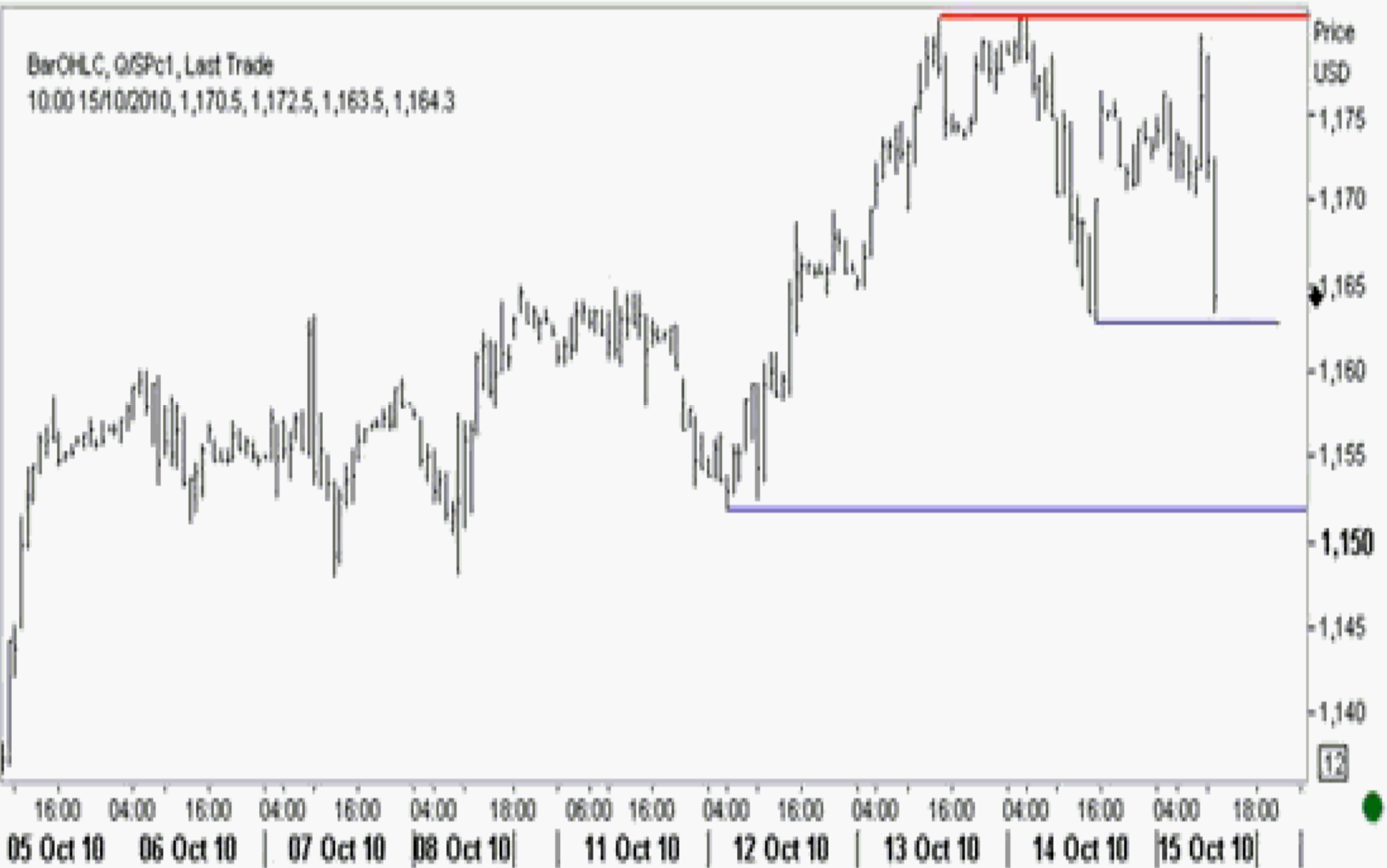
S&P 500

Hourly Q/SPc1

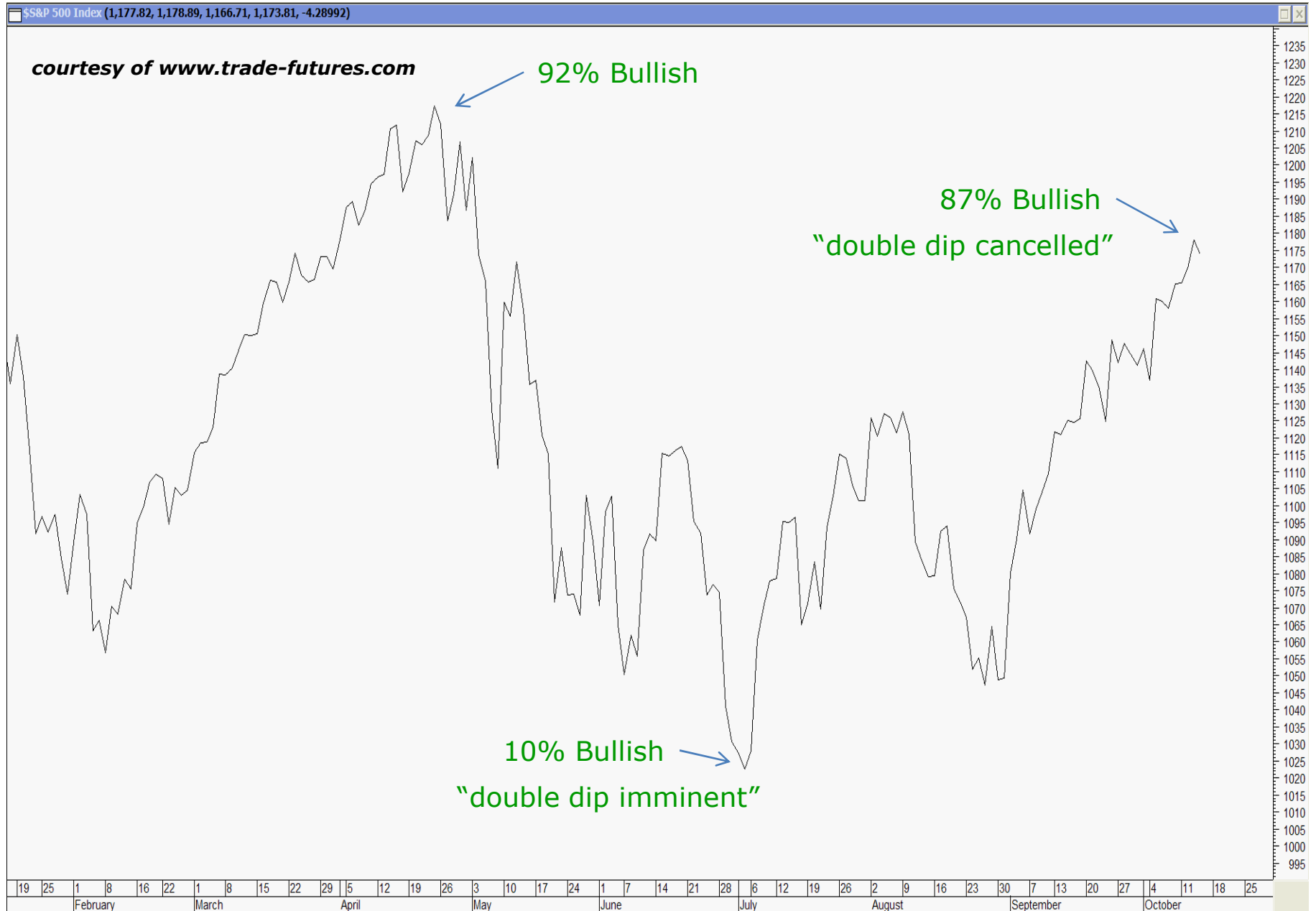
07:00 05/10/2010 - 02:00 18/10/2010 (CHG)

BarOHLC, Q/SPc1, Last Trade

10:00 15/10/2010, 1,170.5, 1,172.5, 1,163.5, 1,164.3



S&P 500 Sentiment





Markets Will 'Explode Higher' Like a Rocket Ship: Strategist

Published: Monday, 13 Sep 2010 | 1:34 PM ET

Text Size  

By: JeeYeon Park

CNBC News Associate



MORE

Stocks extended their gains into a third week as bank stocks soared following **new global regulatory requirements**. Will the rally continue? Paul Schatz, president of Heritage Capital, and Christopher Zook, chairman and CIO of CAZ Investments, shared their outlooks.

S&P 500 Earnings Reports

Earnings week of October 18

11 of the DOW 30 report

C – Monday morning

IBM – Monday after the close

AAPL – Monday after the close

VMW – Monday after the close

KO – Tuesday morning

BAC – Tuesday morning

YHOO – Tuesday “time not supplied”

BA – Wednesday morning

UTX – Wednesday morning

MO – Wed Morning

EBAY – Wednesday -- time not supplied

NFLX – Wednesday after the close

T – Thursday morning

CAT – Thursday morning

MCD – Thursday morning

TRAD – Thursday market open

TRV – Thursday morning

AXP – Thursday afternoon

AMZN – Thursday market close

BIDU – Thursday market close

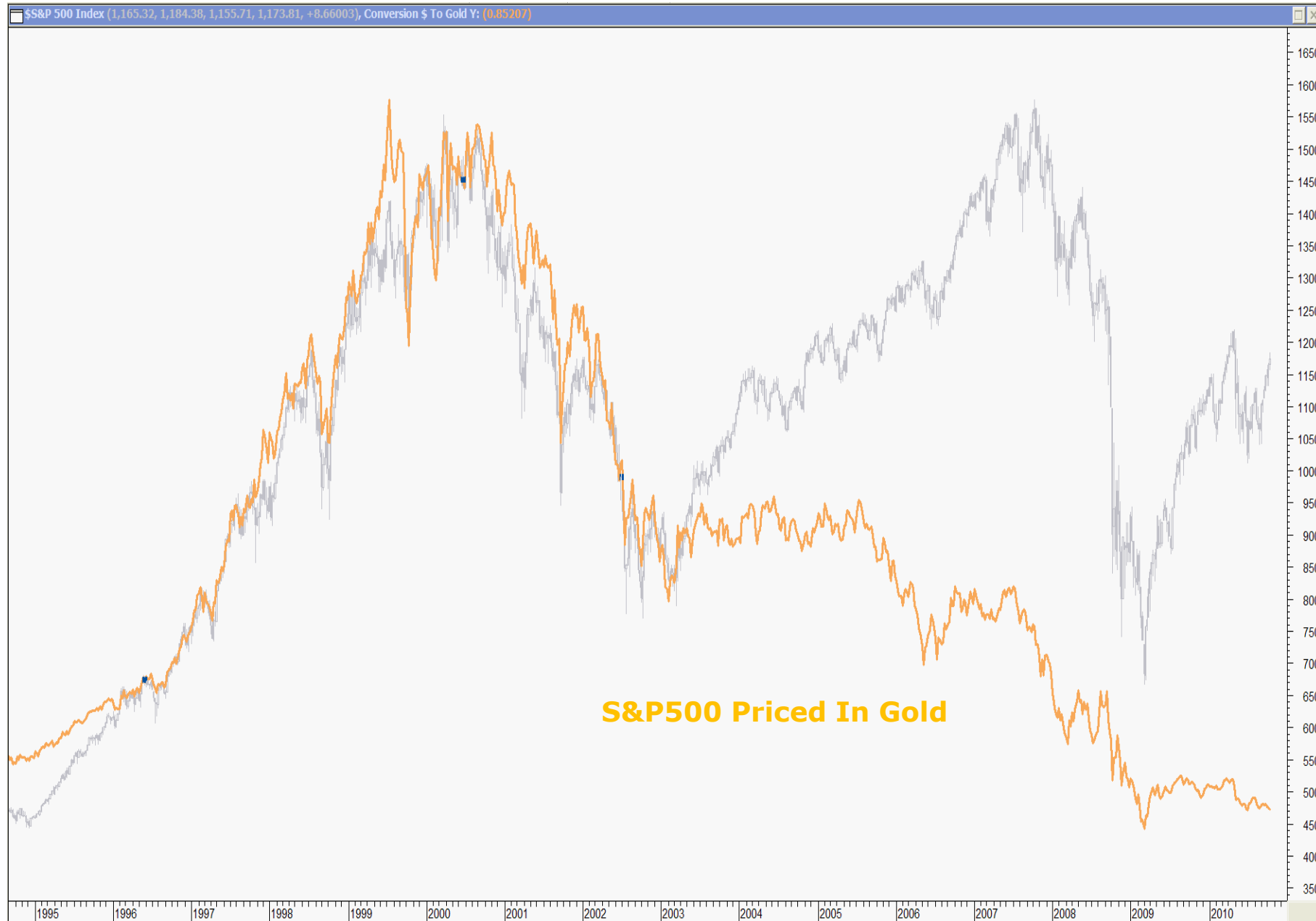
VZ – Friday morning

HON – Friday



The "Real" S&P500

S&P 500



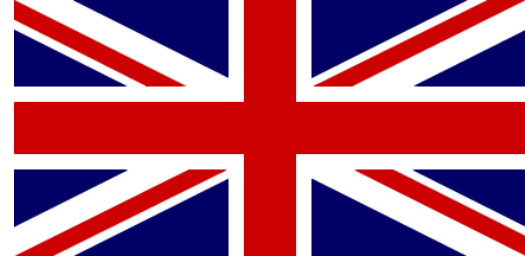
S&P 500

10-YEAR TOTAL RETURN

12/31/99 to 5/5/10

Transaction costs excluded

INDEX	Total Return
CASH 3-month T-bill	+31.36%
S&P 500 dividends included	-8.48%



FTSE100

FTSE100





Commodities

CCI Commodity Index



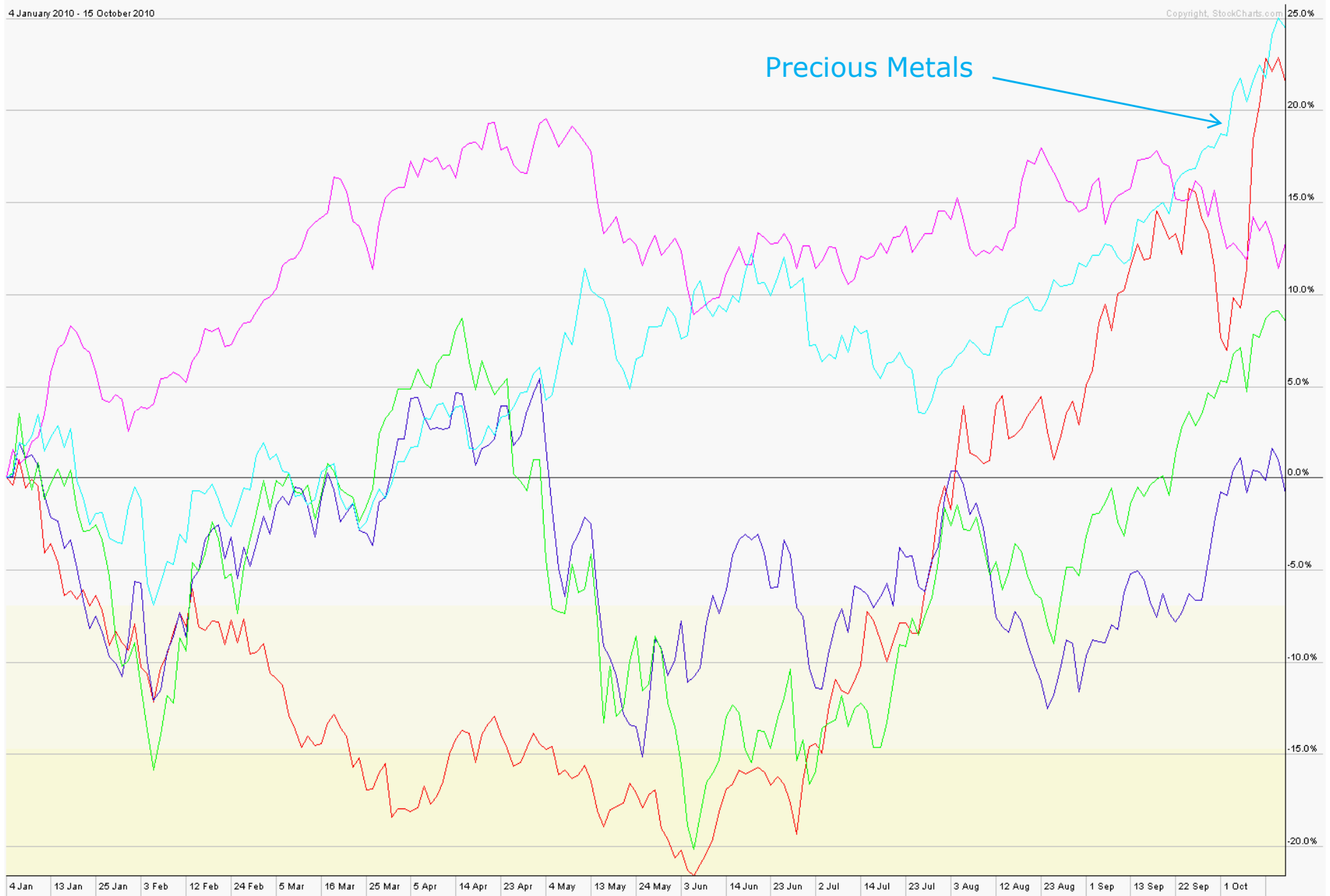
Commodity Relative Strength

■ S&P GSCI Agric (EOD) ■ S&P GSCI Ener SP (EO) ■ S&P GSCI IndMt (EOD) ■ S&P GSCI Lvs& (EOD) ■ S&P GSCI PreMt (EOD)

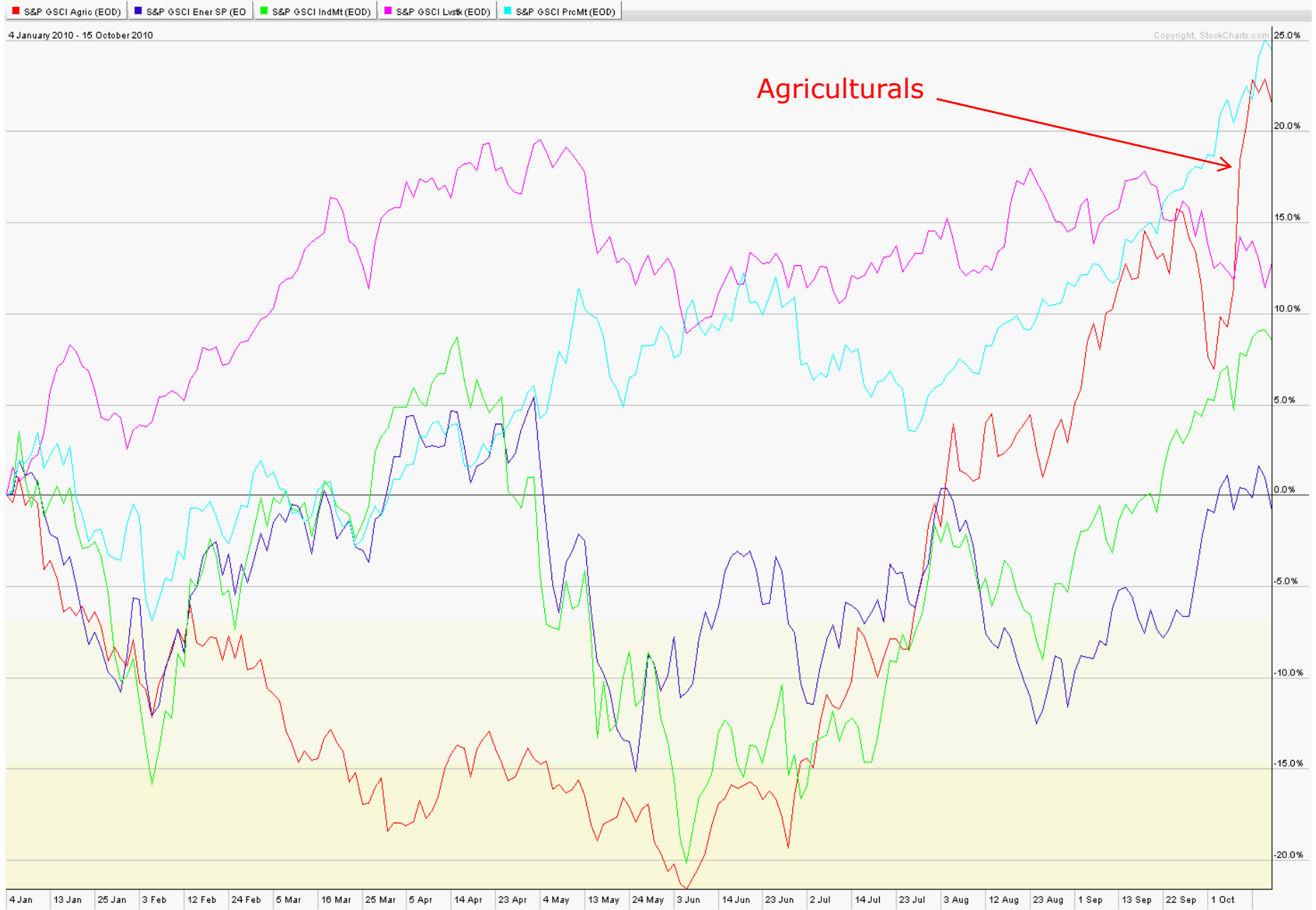
4 January 2010 - 15 October 2010

Copyright, StockCharts.com

Precious Metals



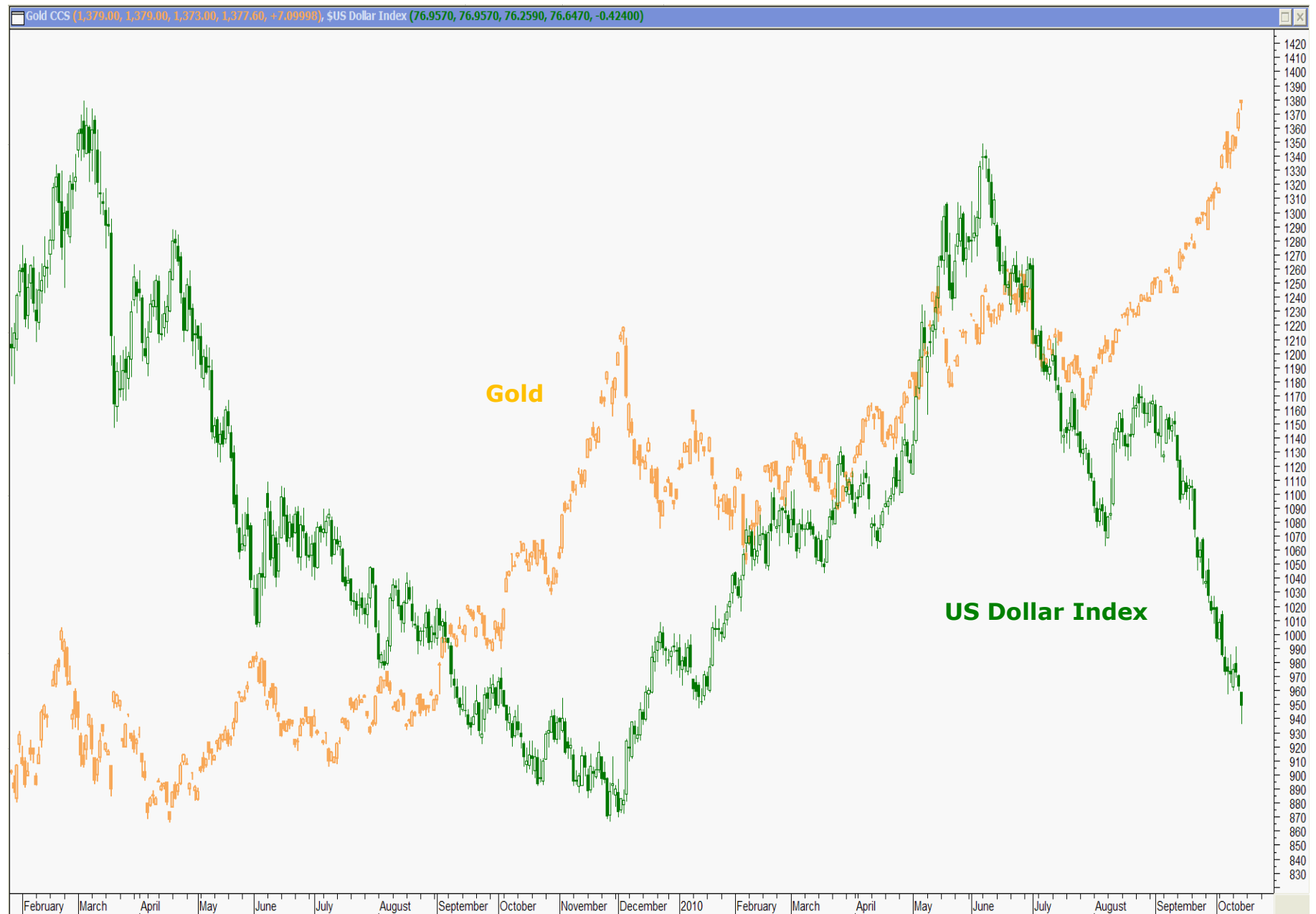
Commodity Relative Strength



Gold



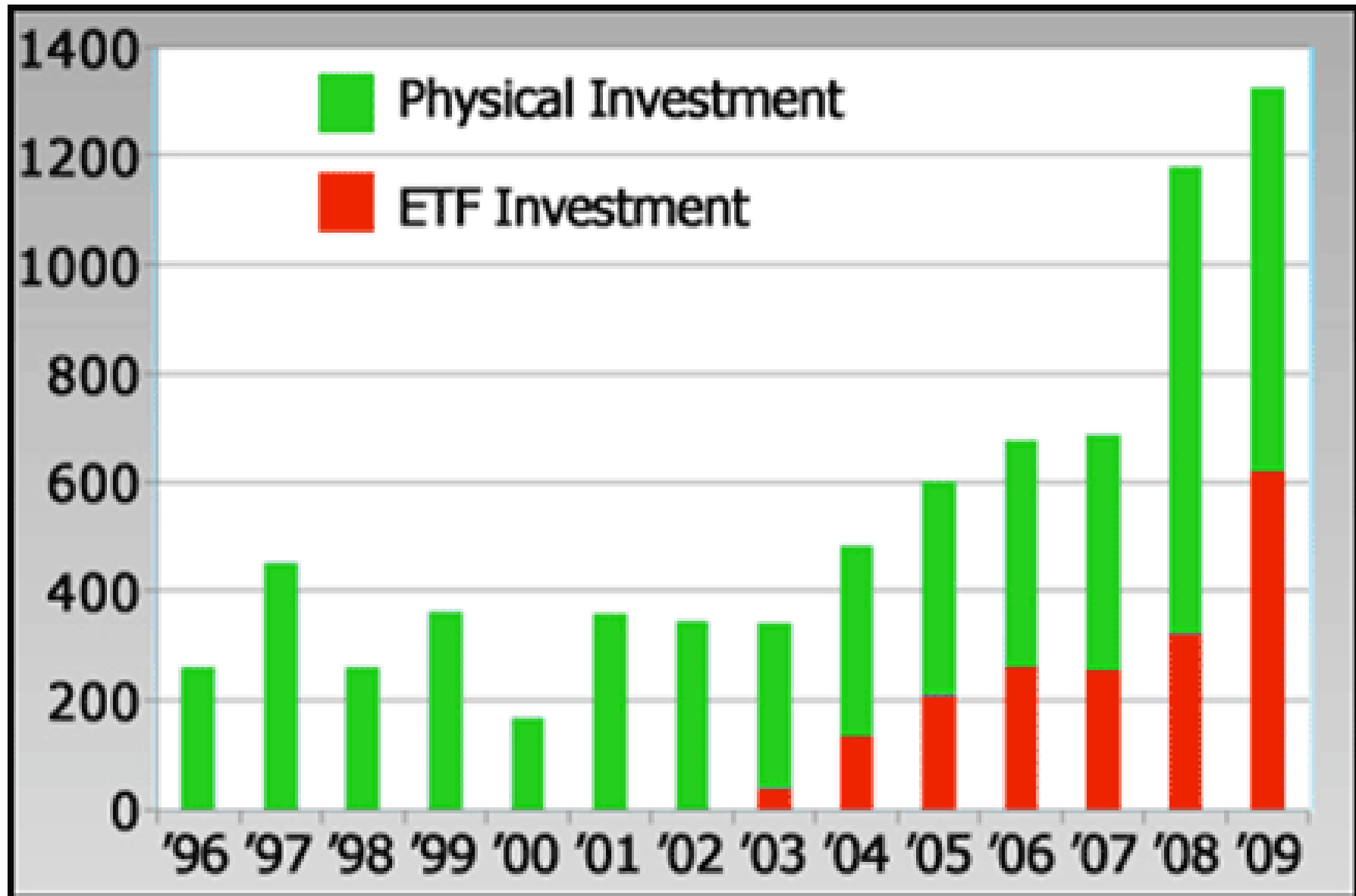
Gold



Gold

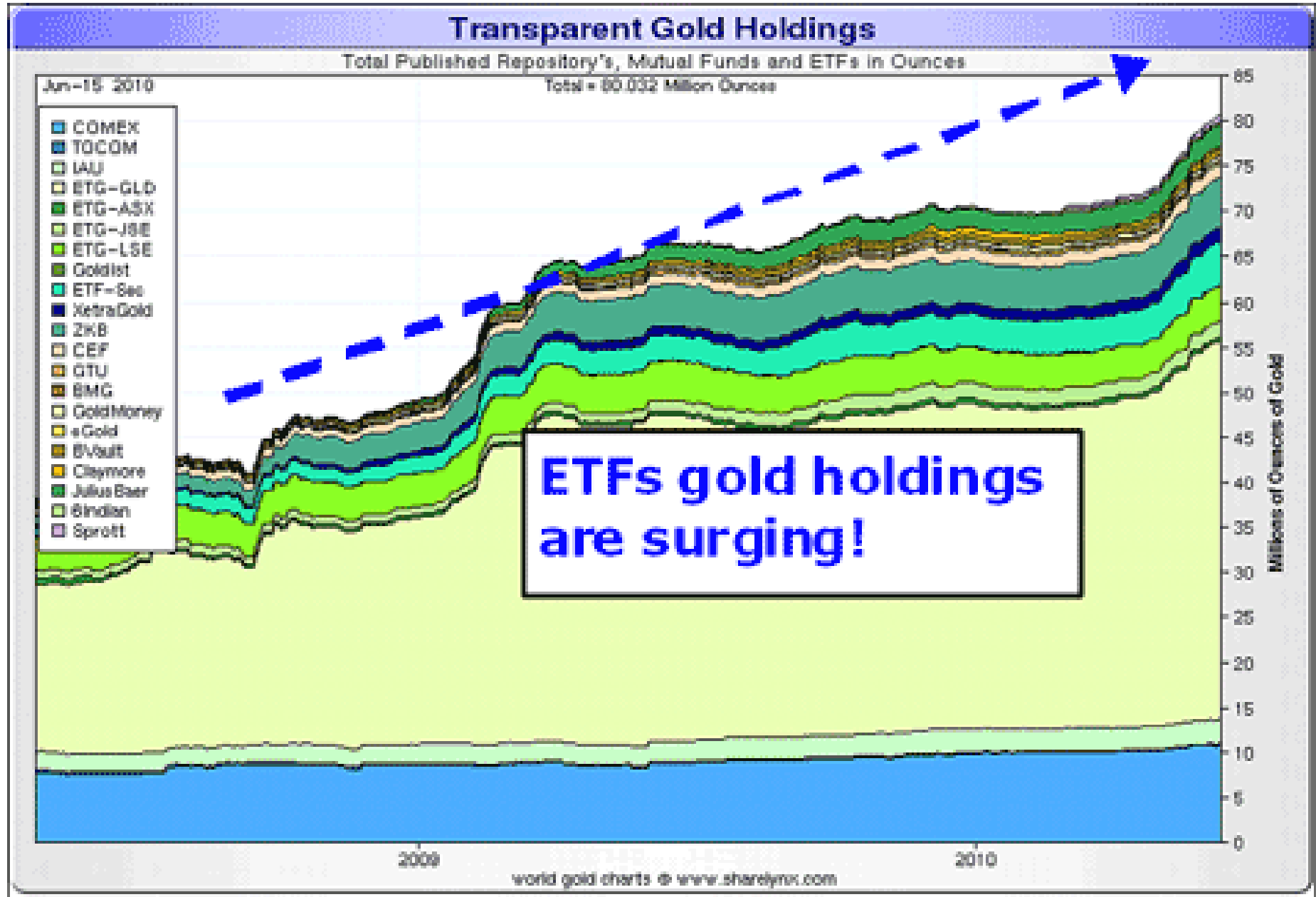


Gold



Source: GFMS Ltd.

Gold



Gold

Deutsche Bank AG DB Gold Double (PCX)

Edit

Range: [1d](#) [5d](#) [3m](#) [6m](#) [1y](#) [2y](#) [5y](#)

Type: **Bar** | [Line](#) | [Cdl](#)

Scale: [Linear](#) | **Log**

Size: [M](#) | **L**

Compare: DZZ vs ☐ FTSE 100 ☐ FTSE 250 ☐ DowJones [Compare](#)

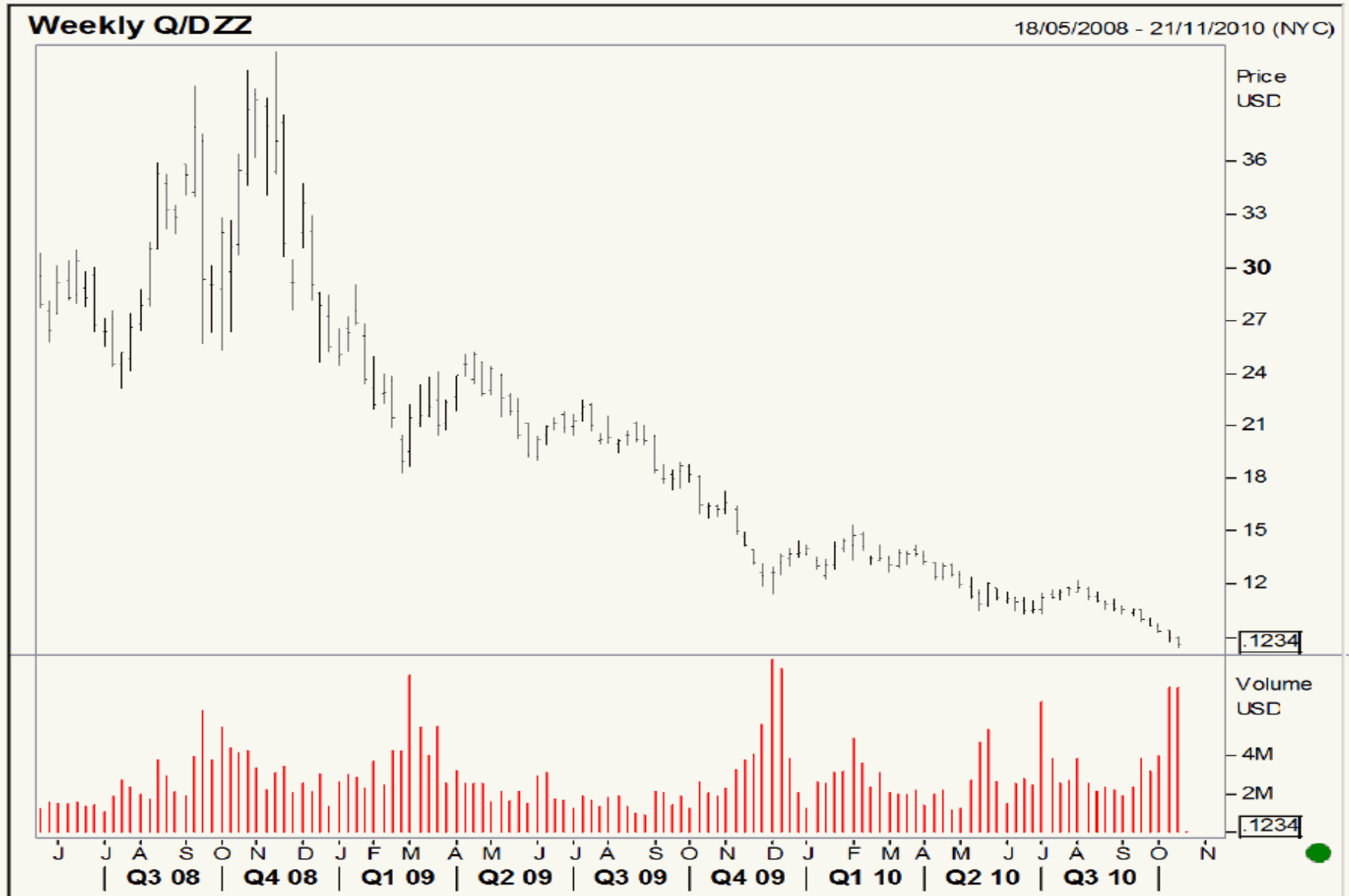


Copyright 2009 Yahoo! Inc.

<http://uk.finance.yahoo.com/>

Gold

PowerShares DB Gold Double Short ETN (DZZ) Weekly:



Silver



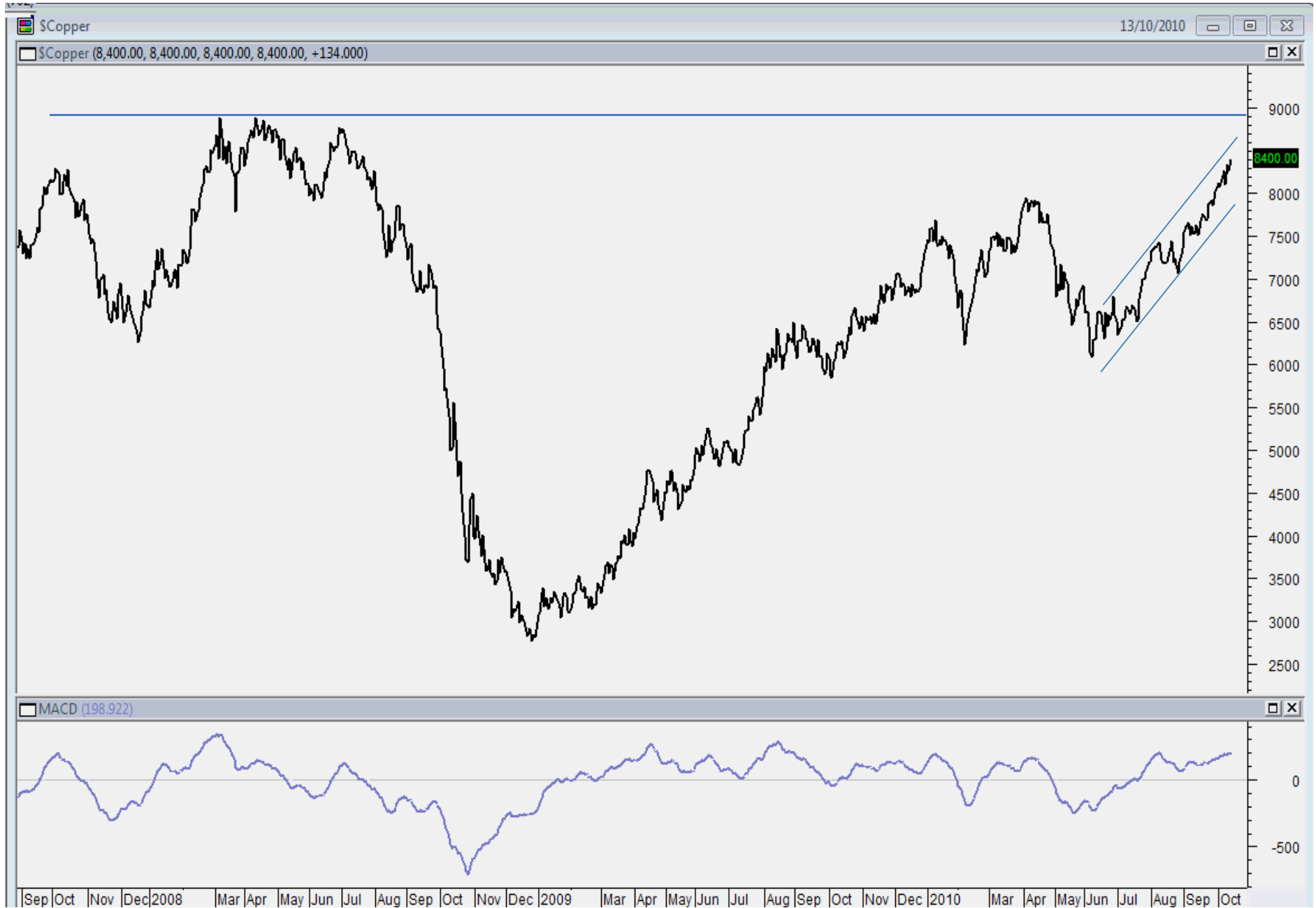
Silver



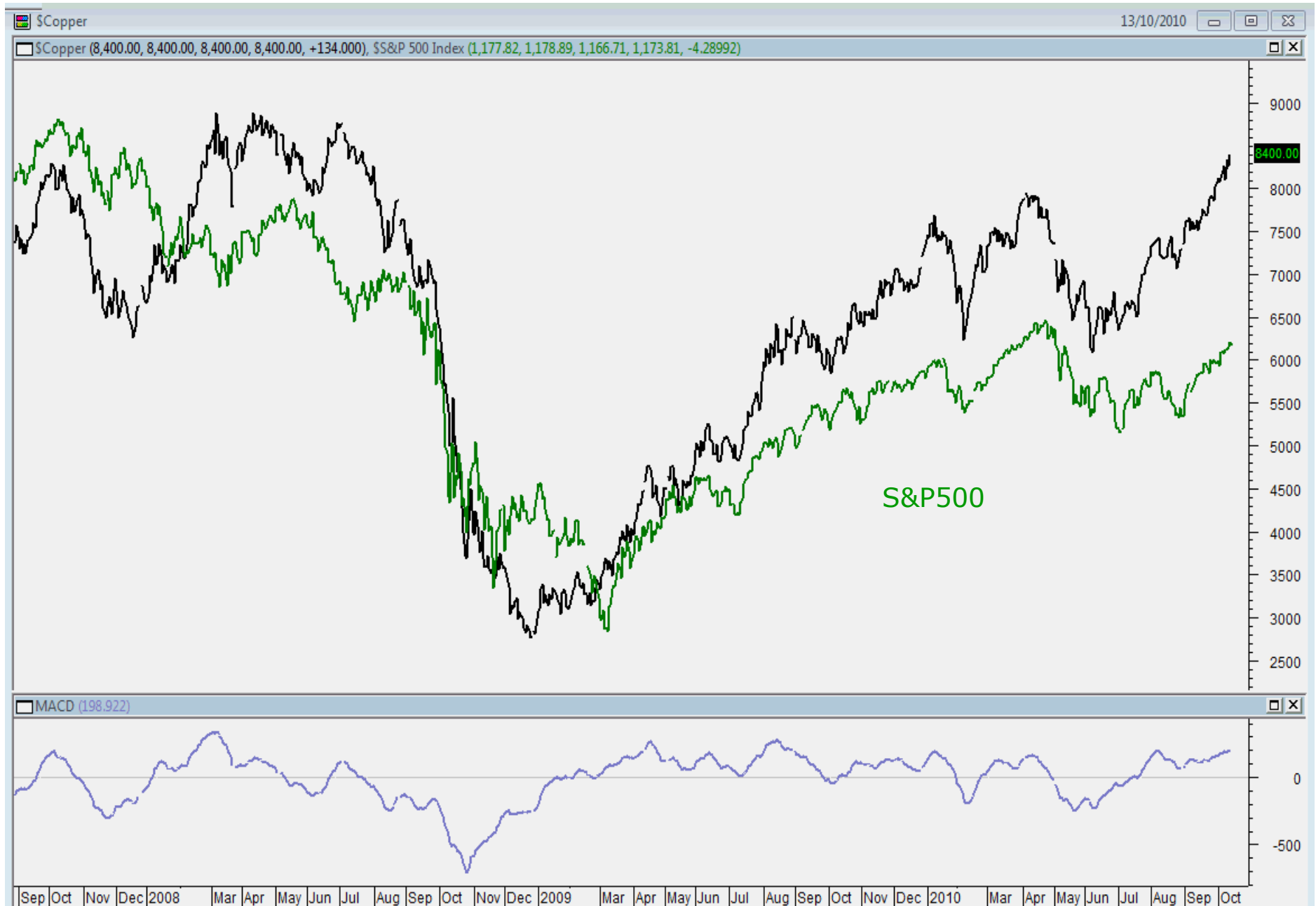
Copper



Copper



Copper



Wheat



Wheat Last Month

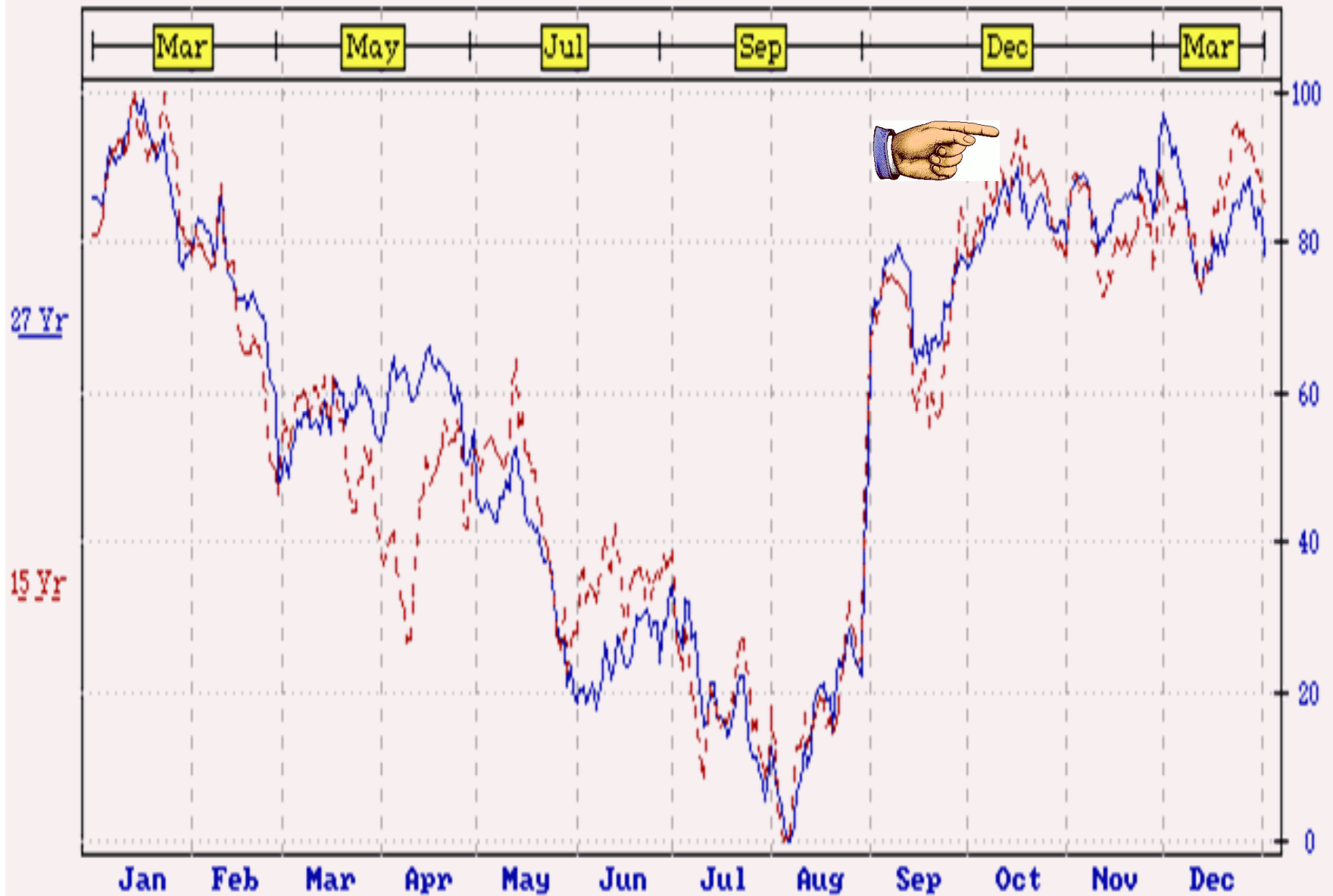


Wheat



Wheat

Wheat(KCBT) 27 Year Seasonal(1976-2002)



Wheat



London
Stock Exchange

[Home](#)[Prices and markets](#)[News and finance](#)[Statistics](#)[Products and services](#)[For traders and brokers](#)[For companies and advisers](#)[For specialist issuers](#)[Stocks](#)[Indices](#)[ETFs](#)[ETCs](#)[Retail Bonds](#)[Covered Warrants](#)[Structured Products](#)[Funds](#)[International Markets](#)

[Home page](#) > [Prices and markets](#) > [ETCs](#) > [ETFs SHORT WHT](#)

[News and events](#)[Issuers](#)[Multi currency](#)

SWEA ETFs COMMODITY SECURITIES LD ETFs SHORT WHEAT

ETFs SHORT WHT Currency USD

[Summary](#)[Interactive chart](#)[Prices and trades](#)[Technical analysis](#)[News analysis](#)[News](#)

Price	+/-	Var %	Volume	Last close
63.12	▼-1.03	-1.60%	55	63.12 on 20-Sep-2010

Bid	Offer	Period name
63.02	63.22	EOA
High	Low	Special conditions
63.29	63.29	NONE

As at 20-Sep-2010 20:18:43 - All data delayed by at least 15 minutes.

[Latest news](#)[MORE](#)

Crude Oil

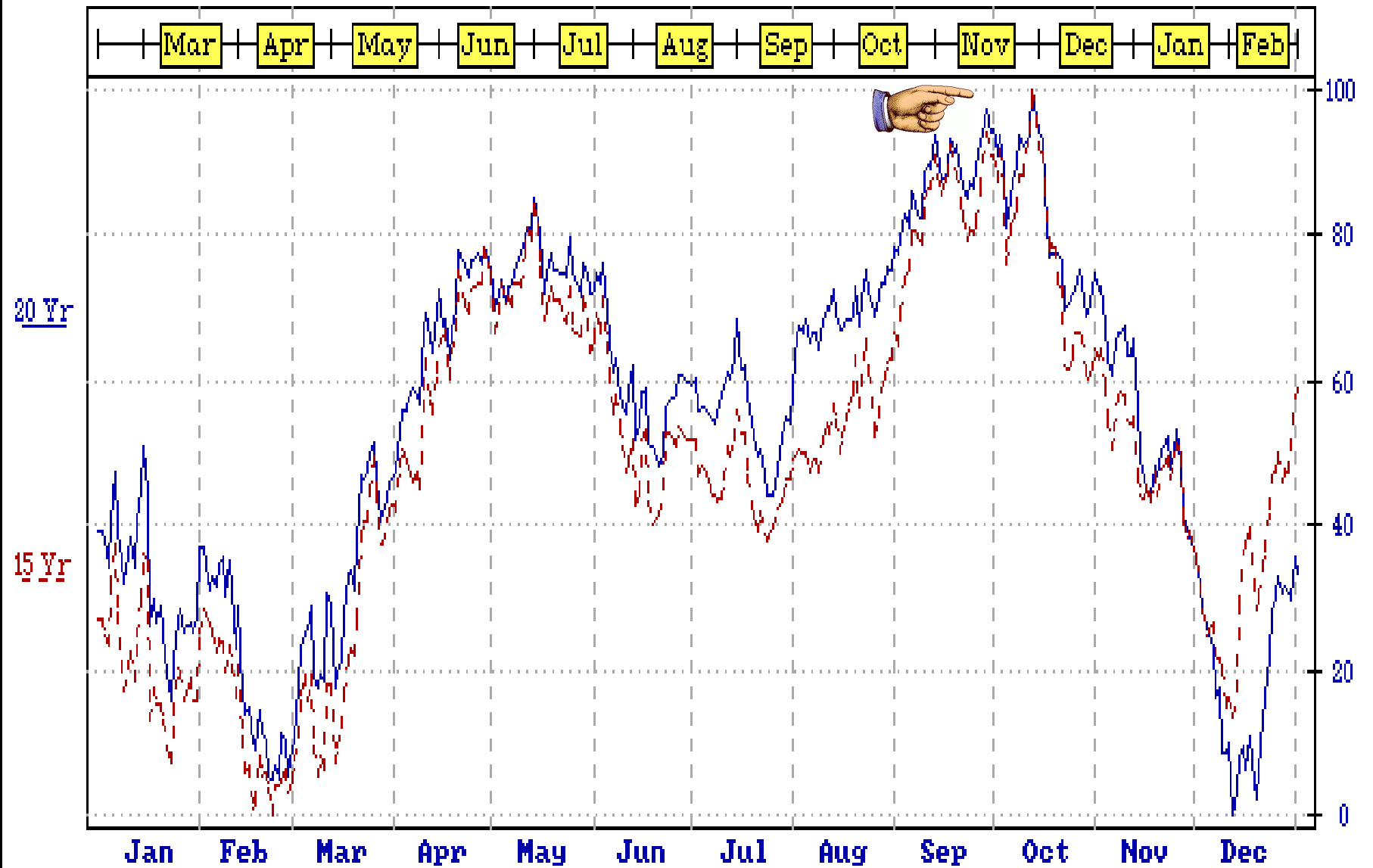


Crude Oil



Crude Oil

Crude Oil(NYM) 20 Year Seasonal(1983-2002)



Crude Oil



London
Stock Exchange

[Home](#)[Prices and markets](#)[News and finance](#)[Statistics](#)[Products and services](#)[For traders and brokers](#)[For companies and advisers](#)[For specialist issuers](#)[Stocks](#)[Indices](#)[ETFs](#)[ETCs](#)[Retail Bonds](#)[Covered Warrants](#)[Structured Products](#)[Funds](#)[International Markets](#)

[Home page](#) → [Prices and markets](#) → [ETCs](#) → [ETFs SHORT CRU](#)

[News and events](#)[Issuers](#)[Multi currency](#)

SOIL ETFs COMMODITY SECURITIES LD ETFs SHORT CRUDE OIL

ETFs SHORT CRU Currency USD

[Summary](#)[Interactive chart](#)[Prices and trades](#)[Technical analysis](#)[News analysis](#)

Price	+/-	Var %	Volume	Last close
66.60	▼-1.68	-2.46%	68,534	66.56 on 20-Sep-2010

Bid	Offer	Period name
66.56	66.63	EOA
High	Low	Special conditions
68.26	66.56	NONE

As at 20-Sep-2010 19:42:46 - All data delayed by at least 15 minutes.

[Trading Information](#)



Summary Of Positions September 2010

Long US Dollar

Neutral Gold

Neutral Copper

Short Euro

Short Japanese Yen

Short Wheat on break of 20-day MA

Neutral Sterling

Short Stocks



Summary Of Positions October 2010

Long US Dollar

Neutral Gold

Neutral Copper

Short Euro below 1.42

Neutral Japanese Yen

Short Wheat on break of 20-day MA

Short Sterling below 1.60

Short Stocks



That's all Folks!

Next Meeting will be on Tuesday, 16th November